

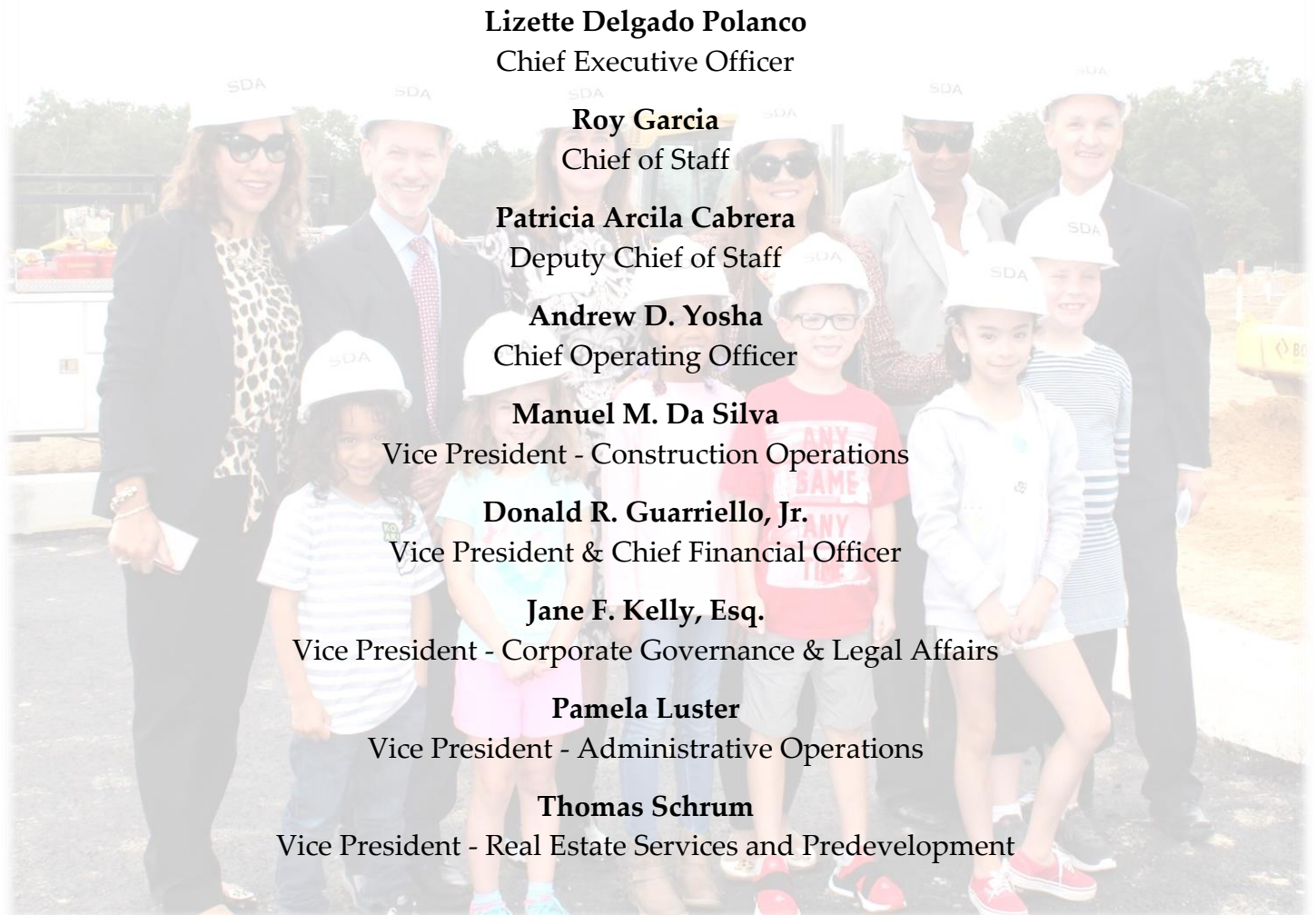


# BIANNUAL REPORT

For the reporting period April 1, 2018 to September 30, 2018

**New Jersey  
Schools Development Authority**  
Building Tomorrow's Schools Today

## EXECUTIVE LEADERSHIP



**Lizette Delgado Polanco**

Chief Executive Officer

**Roy Garcia**

Chief of Staff

**Patricia Arcila Cabrera**

Deputy Chief of Staff

**Andrew D. Yosha**

Chief Operating Officer

**Manuel M. Da Silva**

Vice President - Construction Operations

**Donald R. Guarriello, Jr.**

Vice President & Chief Financial Officer

**Jane F. Kelly, Esq.**

Vice President - Corporate Governance & Legal Affairs

**Pamela Luster**

Vice President - Administrative Operations

**Thomas Schrum**

Vice President - Real Estate Services and Predevelopment

Following is the Biannual Report of the New Jersey Schools Development Authority (SDA) for the period April 1, 2018 through September 30, 2018. This report is submitted under the provisions of P.L. 2007, c. 137 ("The August 2007 legislative amendments"), which modified the Educational Facilities Construction and Financing Act (EFCFA) (P.L. 2000, c.72).

This report summarizes the progress and accomplishments of New Jersey's school construction program during the six-month reporting period. The New Jersey Schools Development Authority (SDA or the Authority) fully funds and manages the new construction, modernization and renovation of school facilities projects in 31 school districts known as SDA Districts. The Authority also makes grants available to Regular Operating Districts (RODs) throughout New Jersey for facilities projects approved by the NJ Department of Education (DOE).

# SDA Board Members

## Public Members



**Robert Nixon, Acting Chairman**  
*Director of Government Affairs,  
NJ State Policeman's Benevolent Assn.*



**Kevin Egan**  
*Business Representative, I.B.E.W. Local 456*



**Richard Elbert, AIA**  
*General Counsel, Americas  
Bjarke Ingels Group  
Public Member*



**Lester Lewis-Powder**  
*Executive Director, Let's Celebrate, Inc.*



**Loren P. Lemelle**  
*Retired Executive, Johnson and Johnson*



**Michael Maloney**  
*Business Manager/ Financial Secretary,  
Plumbers & Pipefitters Local Union No. 9  
President, Mercer County Central Labor  
Council*



**Mario Vargas**  
*Farmers Insurance*

## Ex-Officio Members



**Dr. Lamont Repollet**  
*Commissioner, New Jersey Department of  
Education*



**Tim Sullivan**  
*Chief Executive Officer, New Jersey Economic  
Development Authority*



**Lt. Governor Sheila Oliver**  
*Commissioner, New Jersey Department of  
Community Affairs*



**Elizabeth Maher Muoio**  
*State Treasurer, New Jersey Department of the  
Treasury*



## MESSAGE FROM THE CEO



Thanks to Governor Phil Murphy, it is an honor to be the first female CEO of the NJSDA and a privilege to lead the construction and delivery of high-quality schools that meet the needs of New Jersey's most valuable citizens - our kids.

This current school year, the SDA opened four new or renovated schools in Garfield, New Brunswick, Newark and Vineland and worked on scores more projects in our 31 SDA Districts. These four new schools provided more than 2,000 additional seats for students throughout New Jersey and will impact nearly 2,500 students overall.

Since our inception, we've provided \$5.5 billion in funding for more than 850 school facilities projects in SDA Districts throughout the State of New Jersey. SDA has also provided more than 5,400 grants for ROD Districts in all 21 New Jersey counties. Overall, the SDA has impacted the lives of more than 1 million schoolchildren throughout the State of New Jersey. That's quite an accomplishment and commitment from the State of New Jersey, but there's so much more work for us to do to ensure EVERY single child in New Jersey receives a quality education.

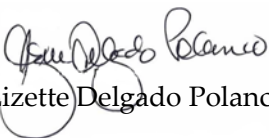
Our team at SDA and our contractors are first rate and I'm so proud to be leading them as they BUILD TOMORROW'S SCHOOLS TODAY and improve the quality of life and the quality of education for New Jersey schoolchildren.

As the CEO of the New Jersey Schools Development Authority, I'm not just looking for our organization to build tomorrow's schools today, I am exploring ways to lift up communities by having a stronger emphasis on local hire, good jobs, and being more inclusive of small, women, and minority owned businesses.

SDA wants to involve our community stakeholders every step of the way in the planning and construction of new schools across the State. While we are tasked with building schools throughout the State, we know that we aren't just building a building. SDA is building state-of-the-art schools where boys and girls with dreams can become men and women of vision.

We have so much more work to accomplish at the SDA. I look forward to leading our top-notch staff in the years ahead as we help to give every child in the State a quality and meaningful education.

Sincerely,

  
Lizette Delgado Polanco

# SDA'S IMPACT ON STUDENTS AND COMMUNITIES

## Students Gain Access to Improved Schools in September

In 2018 more than 2,000 students returned to school and had access to safe, secure and modern learning centers fully funded and built by the SDA. School facilities constructed by the SDA ensure that children in SDA Districts have equitable opportunities by providing students with the resources they need to succeed. In Garfield, New Brunswick, Newark and Vineland, the educational infrastructure was significantly improved with four new or renovated, first-rate educational environments built by the SDA.

**4 New or Renovated Schools**  
**300,000 Square-feet of New Construction**  
**2,000 New Seats**  
**\$198 Million Invested**

The \$198 million investment in these schools demonstrates SDA's steadfast commitment toward its mission of impacting the lives of New Jersey students and their surrounding communities through the delivery of innovative and improved educational facilities. This investment is about more than just schools as these schools are more than just places of learning. They are community gathering places. For more than 2,500 students and their surrounding community these facilities are a safe haven, a place for the arts and athletics and a place where future leaders are educated.

### *Paul Robeson Community Theme School for the Arts, New Brunswick*

On the first day of school at the Paul Robeson Community Theme School for the Arts in New Brunswick, students entered a building so improved it must have seemed new. The \$48.5 million addition/renovation project at this school provided quality spaces that were lacking in the previous facility. The project delivered a 60,500 square-foot, three-story addition that provided a new multi-purpose room, 30 new classrooms and four small group instruction rooms. The school's capacity nearly doubled in size thanks to the State's vital investment in this community.

### *South Street Elementary School, Newark*

At the ribbon cutting ceremony for the new \$69.9 million South Street Elementary School in Newark, excited students and teachers lined the hallway to welcome guests to their new home. Here, students were able to leave behind an antiquated 130+ year-old facility and enter a modern learning environment that includes an outdoor learning classroom,



one-to-one technology and a spacious outdoor play area. The principal of the new school commented that the facility takes away a barrier that existed for the students before. Now, in her opinion, the new learning environment enhances the outstanding curriculum and teachers at the school.

**James Madison Elementary School, Garfield**

In Garfield, a school built in 1920 was so severely overcrowded that learning was inhibited. The new \$29.7 million James Madison Elementary School has provided a modern, appropriate learning environment for 300 students. Upon entering their new school, students were in awe of the 53,000 square-foot facility, begging to go play on their new playground and learn in the media center. They also no longer have “art from a cart,” thanks to a dedicated art room outfitted with a kiln, sinks and other creative spaces.



**Lincoln Avenue Middle School, Vineland**

In August, Governor Phil Murphy welcomed the community to the new Lincoln Avenue Middle School in Vineland. This new \$49.8 million facility for 624 students in 6<sup>th</sup> through 8<sup>th</sup> grade will have a lasting impact on thousands of children’s lives, for generations to come. At the event, Governor Murphy said, “I cannot think of a more important investment that we can make as a State than in the education of the next generation, whether here in Vineland or elsewhere across our State.”

**“Our jobs are to ensure you (the students) are fully prepared for your futures, to chase whatever dreams you have for yourselves. To do that, you need a school that allows you to take those all-important first steps. This school will.”**  
*-Governor Phil Murphy at the Ribbon Cutting Ceremony for the new Lincoln Avenue Middle School in Vineland*

2018 SDA School Openings				
District	Project Name	Project Type	Total Estimated Project Cost	Max Student Capacity
Garfield	James Madison E.S.	New School	\$29.7 Million	305
New Brunswick	Paul Robeson E.S.	Addition/ Renovation	\$48.5 Million	893
Newark	South Street E.S.	New School	\$69.9 Million	657
Vineland	Lincoln Avenue M.S.	New School	\$49.8 Million	624

To provide a closer look at the schools opened by SDA during this reporting period, we have included the following individual school profiles.

# JAMES MADISON ELEMENTARY SCHOOL

The new 53,000 square-foot, three-story school was designed to educate approximately 300 students in kindergarten through 5th grade.



**SCHOOL DISTRICT:** Garfield

**PROJECT TYPE:** New School

**OCCUPANCY:** September 2018

**TOTAL STATE INVESTMENT:** \$29.7 Million

**DELIVERY TYPE:** Design-Bid-Build

**CONTRACTOR:** Brockwell & Carrington Contractors, Inc.

**ARCHITECT:** Fraytak, Veisz, Hopkins, Duthie PC

**CONSTRUCTION MANAGER:** The McCloud Group

# LINCOLN AVENUE MIDDLE SCHOOL

The new 99,000 square-foot, single-story school was designed to educate approximately 620 students in 6th through 8th grade.



**SCHOOL DISTRICT:** Vineland

**PROJECT TYPE:** New School

**OCCUPANCY:** September 2018

**TOTAL STATE INVESTMENT:** \$49.8 Million

**DELIVERY TYPE:** Design-Build

**CONTRACTOR:** Ernest Bock & Sons, Inc.

**ARCHITECT:** SSP Architectural Group

**CONSTRUCTION MANAGER:** Joseph  
Jingoli & Sons



# PAUL ROBESON COMMUNITY ELEMENTARY SCHOOL

The project included a 60,000 square-foot addition along with renovations to the existing 59,400 square-foot school. This project increased the capacity of the existing school to approximately 900 students in pre-kindergarten through 5th grade.



**SCHOOL DISTRICT:** New Brunswick

**PROJECT TYPE:** Addition/Renovation

**OCCUPANCY:** September 2018

**TOTAL STATE INVESTMENT:** \$48.5 Million

**DELIVERY TYPE:** Design-Build

**CONTRACTOR:** Hall Construction Co.

**ARCHITECT:** P&S Engineering, Inc.

# SOUTH STREET ELEMENTARY SCHOOL

The new 103,000 square-foot school was designed to accommodate approximately 600 students in pre-kindergarten to 8th grade.



**SCHOOL DISTRICT:** Newark

**PROJECT TYPE:** New School

**OCCUPANCY:** September 2018

**TOTAL STATE INVESTMENT:** \$69.9 Million

**DELIVERY TYPE:** Design-Build

**CONTRACTOR:** Ernest Bock & Sons

**ARCHITECT:** SSP Architectural Group

**CONSTRUCTION MANAGER:** STV Construction, Inc.

## Advancing New Projects

Against the backdrop of four school openings this reporting period, the SDA continued to advance additional projects in various stages of development. SDA-constructed schools are designed and built to make New Jersey's educational infrastructure stronger and fairer for all students.



With shovels in hand, students in **East Orange** ceremonially broke ground in May, kicking off the construction of a \$41.2 million state-of-the-art educational facility center that will provide countless opportunities for generations of young learners. The new **George Washington Carver Elementary School** will be the fourth new facility built by the SDA in East Orange. The new 77,000 square-foot school will provide the East Orange School District with space to educate

470 students in Prekindergarten through 5<sup>th</sup> grade. This new school will offer multiple state-of-the-art resources to students in addition to general classrooms. This includes vocal and instrumental rooms, a science lab, small group instruction spaces, an art room, a multipurpose room, cafeteria and a media center.

During the reporting period, students and stakeholders braved the rain to celebrate a beam signing for the new **Seaman Avenue Elementary School** in **Perth Amboy**, scheduled to open to students next year. The beam signing celebrated the significant progress of this project with the Perth Amboy community, especially with the students.

The students signed their name to a piece of steel that will become part of their future school, representing the generations of students that will benefit from a new state-of-the-art learning environment.

The \$56.4 million investment in a new 128,000-square-foot facility designed to educate approximately 800 students in kindergarten through 5<sup>th</sup> grade will provide students with the spaces they need to learn and fulfill their dreams. The 3-story



building will include 38 classrooms, six small group instruction rooms, a science demonstration room, a speech room, vocal and instrumental music rooms, a computer lab, a gymnasium, a media center, a cafeteria, a multipurpose room with stage, outdoor play and learning areas.

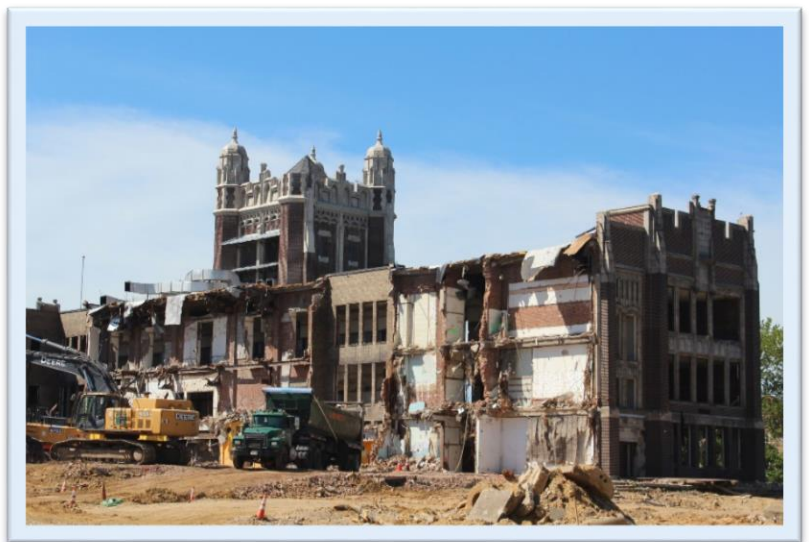


*The time capsule inside of a 1916 cornerstone of Camden H.S.*

During the reporting period, early site preparation activities also continued for the **Camden High School** project. As the contractor was performing demolition on the former school, a time capsule was uncovered in the 1916 cornerstone of the building. Together with Camden School District officials, the Camden County Historical Society, Camden High School students and alumni, SDA opened the 102-year-old time capsule on site. While the majority of the contents of the time capsule had deteriorated, there were a few items that remained intact

for more than a century. Copies of the Camden Argus and Camden Daily Post newspapers, were among the items discovered in the cornerstone. An article in the October 12, 1916 edition of the Camden Argus, a weekly publication, included an article noting that a cornerstone would be laid in the then new \$500,000 Camden High School. The time capsule and its contents were given to the Camden Historical Society to be preserved.

A design-build contract for the new Camden High School was issued in August 2018. Design activities are ongoing for the 242,000 square-foot facility, being designed to educate approximately 1,200 students in 9<sup>th</sup> through 12<sup>th</sup> grade.



## Ongoing Construction Benefits Communities

At the end of the reporting period, the SDA had eight projects in construction that will provide more than 6,000 new seats, benefit more than 8,400 students and represent a state investment of nearly \$580 million.

## Capital Projects in Construction as of September 30, 2018

District	Project Name	Project Type	Anticipated School Opening	Total Estimated Project Cost	Max Student Capacity
East Orange	George Washington Carver E.S.	New School	September 2020	\$41.2 M	512
Harrison	Kennedy E.S.	New School	September 2020	\$36.1 M	432
Irvington	Madison Avenue E.S.	New School	September 2019	\$38.5 M	504
Millville	Millville Senior H.S.	Addition/ Renovation	Phased	\$137.5 M	2,384
Passaic City	Leonard Place E.S.	New School	September 2019	\$55.9 M	700
Perth Amboy	Seaman Avenue E.S.	New School	September 2019	\$56.4 M	804
Pemberton	Alexander Denbo E.S.	New School	September 2020	\$58.7 M	930
Trenton	Trenton Central H.S.	New School	September 2019	\$155.4 M	2,176
<b>8 Schools in Construction:</b>				<b>\$579.7 M</b>	<b>8,437</b>

In addition to those projects in construction, significant activity occurred on many other projects in the Capital Portfolio. At the end of the reporting period

- 3 projects have initiated the design phase of a design-build contract;
- 3 projects have external design services ongoing;
- 1 project is in the Early Site Preparation phase;
- 2 projects are in design development (with SDA Design Studio/Bridging Architect); and
- 1 project is in scope development.

For a full listing of the status of all Capital Portfolio projects, please see Appendix A.

### Emergent Projects

The SDA's Emergent Project Program demonstrates the commitment of Governor Phil Murphy and the SDA to improve the quality of schools and therefore the quality of life for schoolchildren in SDA Districts across the State. By addressing potential health and safety issues in facilities in need of repair, the SDA remedies conditions including replacement of roofs, windows, exterior masonry, heating and cooling systems, and plumbing, electrical, mechanical and security systems, and water infiltration issues.

This was the case at the Camden Cramer Elementary School. The school, originally built in 1914, received more than \$3.8 million in emergent repairs by the SDA. Work initially included masonry repairs, brick replacement, repair and replacement of select windows, replacement of lintels, waterproofing the courtyard area and a partial roof replacement.

During performance of the initially-approved work, additional safety and other window conditions were identified. As a result, the SDA undertook an additional scope of work to ensure student safety. During the Summer of 2018, the SDA removed and replaced approximately 360 windows at the school.



*Original windows that were opaque and therefore did not provide appropriate daylight.*



*Workers reconstructing window frames to allow for the installation of new windows.*



*Camden Cramer Elementary School - view of original windows, replacement work, and new windows.*

In September, SDA joined Camden Acting Superintendent Katrina McCombs and Mayor Frank Moran to view the recently completed work. For the first time in years, students were able to learn in a watertight environment and see out of windows that were previously opaque, obscuring the natural daylight.

SDA is currently managing 18 emergent projects that were deemed necessary by the New Jersey Department of Education (DOE) due to potential health and safety concerns. At the close of the reporting period, the status of active emergent projects is as follows:

- 3 projects are in construction
- 8 projects are in design
- 7 projects are in scope development

SDA is also providing funding for 8 additional emergent projects delegated for management by local school districts. These projects are currently active. For projects that are delegated, the SDA executes a grant agreement with the local school district. The district is then responsible for procuring and managing consultants and contractors. The SDA maintains oversight throughout the process.

For a status list of the SDA Emergent Program, please see Appendix B.

## Grants Impact Districts Statewide

The work of the SDA extends far beyond the 31 SDA Districts. In fact, since the inception of the State’s school construction program, the SDA has favorably impacted more than 1,700 school facilities in over 500 school districts in all 21 counties in New Jersey through the Regular Operating District (ROD) Grant program. Due to the investment by the SDA and the State, these districts have undertaken projects that include school security upgrades, HVAC repairs, roof replacements, significant rehabilitation as well as additions and new schools.

SDA provides grants of at least 40 percent of eligible project costs to local school districts to leverage the local resources that are used to fund these projects. Of the \$3.45 billion in authorized funding for the ROD Grant program, \$3.16 billion has been expended to date and the remaining funding is fully committed for approved projects.

During the reporting period, the SDA executed three grants for projects in two school districts.

Regular Operating District Grants Executed (April 1, 2018-September 30,2018)				
School District	School Name	Total Project Cost	State Share	Project Description
Burlington County Vocational	Inst of Tech-Westampton	\$160,730	\$64,292	Renovation of 2 toilet rooms to accommodate ADA standards.
Burlington County Vocational	Inst of Tech-Medford Campus	\$1,141,693	\$456,677	Rehabilitation: ADA Renovations.
Montclair	Montclair High School/George Inness H.S. Annex	\$130,595	\$52,238	Roof replacement, storm drainage piping.

The extent of the positive impact of the SDA’s ROD Grant program is demonstrated by the SDA’s active portfolio of 655 grant projects in 162 school districts throughout the State. At the end of the reporting period, these active projects represent more than \$291 million in state share, allowing for the expenditure of more than \$658 million in total project costs in New Jersey communities.

## **BENEFITTING NEW JERSEY BUSINESSES**

### **Strengthening New Jersey's Construction Industry**

Benefits of the State's significant investment in the construction of new schools extend beyond student education. For nearly two decades, the State's school construction program has served as a vehicle for economic stimulus, often when it was needed most.

During this reporting period, the SDA opened four new or renovated schools. The \$198 Million in total project costs represents more than 1,700 job-years created. These jobs have real impacts for plumbers, electricians, roofers, steelworkers and so many more industries who help to build tomorrow's schools today.

For the capital projects currently in construction, the nearly \$580 million investment in school facilities represents the creation of more than 5,000 job-years. In addition, the 655 active ROD Grants throughout the State with total project costs of more than \$658 million represents an additional 5,700 job-years created by investing in New Jersey schools.

The work of the Schools Development Authority touches many segments of New Jersey's population. As SDA works toward its mission to lift up students and communities through a significant investment in school facilities, New Jersey's construction industry is an integral and valued partner in the process.

### **Expanding SDA's Commitment to New Jersey's Small Businesses**

A major initiative of SDA's new leadership is to increase the number of Small, Minority and Women-owned Business Enterprises (SMWBE) that work with the Authority. To further that goal, a separate division, dedicated solely to attracting these SMWBE firms was recently created. The division's mission is to increase diversity awareness, increase new SMWBE participation and provide quality training and networking opportunities for SMWBE companies.

A main focus of the new SMWBE Division is to improve the SDA's community outreach. SMWBE will work to expand college recruitment (internship program) with an emphasis on increasing minority student involvement. Part of this effort will include recruiting those with majors that relate to all aspects of the SDA and not exclusively construction.



## Providing Training for SMWBEs



*Some of the graduates of the 2018 SMWBE Contractor Training Program.*

the State of New Jersey on future school projects.

This year the SDA had 31 participants successfully complete the nine-week program, which was held at locations in both Trenton and Newark. Program participants were given an opportunity to learn from SDA subject matter experts on topics including business plan writing, navigating the SDA and State landscape for job opportunities, marketing, accounting, prequalification and OCIP, procurement, construction contract law and safety.

While the feedback from participants is universally positive, the SDA continually strives to make improvements to this program to benefit its participants. Moving forward, SMWBE staff is looking to create a pool of qualified companies who have successfully completed the training program to be available for general contractors looking to meet and exceed their SBE goals on SDA-funded projects. In addition, SDA is exploring revisions to its current procurement processes in order to further expand SMWBE participation.

*“The program helped us to understand all aspects of the construction contractor requirements to do business with the SDA and other state agencies in New Jersey. Industry experts provided training and were highly skilled in the functional areas. We look forward to continuing a win-win relationship with the SDA, state agencies and commercial contractors to help SMWBE firms prosper in the construction industry.”*

Helena van der Merwe  
A-Plus Consulting, LLC Newark, NJ

# Construction Contracts for Small Businesses

The goal of the SDA’s Small Business program is to ensure that at least 25% of the total dollar value of all publicly advertised contracts awarded by the SDA during a fiscal year goes to these firms. The SDA requires consultants and prime contractors to make good-faith efforts to identify and hire available small business enterprise sub-consultants and subcontractors and to award at least 25% of the total contract value to them. The SDA consistently meets or exceeds this goal as reflected in the 38.14% total achieved during this reporting period. In addition, the SDA is developing procurement criteria that will support diversity by comparatively evaluating bidders’ plans for engagement of minority and women owned business enterprise sub-consultants and subcontractors.

<b>SDA Contract Awards to Small Business Enterprises (SBE)</b> <b>(April 1, 2018 – September 30, 2018)</b>	
<b>Total SDA Construction Contracts</b>	\$79,545,061
Total SBE Contracts (inclusive of MBE, SMWBE contracts)	\$30,336,758
Percentage of SDA Contracts Awarded to SBEs	38.14%

The SDA biannually compiles information on the number of school construction contracts awarded by the Authority to women and minority contractors. This information includes the total value of these contracts and the percentage that they represent of all SDA school facilities projects that have entered into construction during the reporting period.

This reporting period, SBE/women-owned businesses received \$5,799,761 or 7.29% of SDA total construction contracts awarded. SBE/minority-owned businesses received \$606,000 or 1% of SDA total construction contracts awarded.

To view the breakdown of minority/female work hours by trade, please see Appendix C.

## Upcoming Opportunities

SDA is comprised of a strong leadership team, experienced professionals and effective processes that work well for all our partners. SDA has a proven track record of consistently delivering projects on budget, on schedule, and with predictability.

The SDA is committed to continuing this track record with additional opportunities for New Jersey's construction industry in the coming year. SDA projects another year of substantial construction investment in 2019. In fact, the SDA plans to advertise construction work valued at more than \$500 million in late 2018 and in 2019.

Among the noteworthy projects we expect to advertise in the next reporting period are:

- New High School in Perth Amboy (Construction Cost Estimate Range: **\$200-\$220M**)
- An Addition/Renovation for Keansburg Port Monmouth Road School (Construction Cost Estimate Range: **\$10-\$20M**)
- Site Preparation Services for a new Union City Middle School (Construction Cost Estimate Range: **<\$5M**)
- Multiple Emergent Projects in Newark (Construction Cost Estimate Range: **<\$5M per project**)
- Emergent Project at Bridgeton High School (Construction Cost Estimate Range: **<\$5M**)
- Emergent Project at Paterson PS #5 (Construction Cost Estimate Range: **\$5M-\$10M**)

## **COMMUNITY OUTREACH**

As noted by CEO Lizette Delgado Polanco in the opening message of this report, SDA wants to involve its community stakeholders every step of the way in the planning and construction of new schools across the State. By finding new ways to engage and positively impact the communities we serve, SDA's hope is to improve lives in a way that goes beyond providing state-of-the-art learning facilities.

SDA is committed to engaging with stakeholders across all platforms. This includes school districts, local elected officials, legislators, local community groups, residents, teachers and students. In order to facilitate this enhanced community outreach, two divisions, Special Projects and Legislative Affairs have been created or expanded at the SDA.

### **Community Engagement**

SDA leadership has also made it a priority to tour all 31 SDA District in order to observe, first-hand, the conditions that exist in some of New Jersey's schools and involve all stakeholders including local, county, state officials, school officials and members of the general public in the planning process for schools in the planning/construction stage.

One of the new approaches to achieve the goal of community engagement is the use of Open House Community Meetings. In these forums, various stakeholders will have the opportunity to hear from SDA and District leadership regarding current projects and District needs. Attendees of these meetings will also have an opportunity to discuss specifics and provide feedback with SDA staff in a smaller, informal setting, while visiting multiple information stations at the Open House Community Meetings. SDA is looking forward to deploying this approach in SDA District Communities throughout the State.

The SDA has also initiated an effort to provide user-friendly and engaging communication for all constituents about SDA news, contractors, events and projects. This September, the SDA launched a presence in many of the major social media platforms:

- Facebook, Twitter, Instagram and Snapchat: Search @NewJerseySDA
- LinkedIN: Search New Jersey Schools Development Authority

## SDA FINANCES

Since 2000, the New Jersey State Legislature has **authorized** \$12.5 billion in funding for school facilities projects (\$8.9 billion for SDA Districts, \$3.45 billion for RODs and \$150 million for vocational schools). Since the program's inception through the end of the reporting period, the amount of bonds **issued** to fund the program equals \$10.8 billion. No new bonds were issued during the reporting period. For a listing of bond issuances to date, please see Appendix E.

As of September 30, 2018, SDA had approximately \$293.93 million in cash on hand, having disbursed \$175.55 million during the reporting period. In June 2018, the SDA Board approved the Authority's 2017 financial statements, audited by Ernst & Young LLP. These can be found on the SDA's website at: <https://www.njsda.gov/NJSDA/Content/public/reports/2017AnnualReport.pdf>.

The SDA strives to safeguard the resources that have been allocated to the school construction program. Toward that goal, SDA continues to pursue several cost recovery opportunities throughout the reporting period. SDA anticipates reaching settlement for these cases in upcoming reporting periods.

In addition, between April 1, 2018 and September 30, 2018, the SDA resolved contract claims with settlements. These settlements equal roughly 27% of the original amounts claimed and represent a significant cost avoidance.

## RECOMMENDATIONS FOR CHANGE

As New Jersey's educational infrastructure continues to age, capital improvement needs throughout the state are increasing. SDA's current funding is committed to existing projects and SDA is unable to undertake additional Capital projects without additional funding.

Based upon the DOE's 2016 Educational Facilities Needs Assessment (EFNA) and the current Capital Plan projects that are advancing through SDA, there remains significant overcrowding across SDA districts. In addition, the current inventory of school buildings in SDA Districts includes over 7 million square feet of building stock that is over 91 years old. By virtue of their age, we expect that needs exist in these facilities.

SDA leadership has seen first-hand – during our tours of the school districts – the difference that appropriate facilities can make in the lives of our schoolchildren and in the communities. Following through on the Governor's commitment to a stronger, fairer New Jersey, we recognize the importance of delivering such facilities across all 31 SDA Districts, ensuring all New Jersey students have access to a fair and equitable education regardless of their zip code.

## **APPENDIX**

**Appendix A - Status of Capital Portfolio Projects**

**Appendix B - Status of Emergent Project Program**

**Appendix C - Number of Minority/Female Work-Hours by Trade**

**Appendix D - Cost of Construction Per Square Foot Comparison to MSA**

**Appendix E - School Facilities Construction Bonds and Notes**

**Appendix F - School Facilities Projects Approved by DOE**

# Appendix A - Status of Capital Portfolio Projects

## Status of Capital Project Portfolio as of September 30, 2018

SDA Capital Portfolio		
School District	School Name	Status
Bridgeton	Buckshutem Elementary School	Completed. School opened to students in September 2016
Bridgeton	Quarter Mile Lane Elementary School	Completed. School opened to students in September 2017
Elizabeth	New ES @ Halloran PS #22 ES site	Completed. School opened to students in September 2017
Garfield	James Madison ES	Completed. School opened to students in September 2018
Gloucester City	Gloucester City Middle School	Completed. School opened to students in September 2017
Jersey City	Patricia M. Noonan ES (ES 3)	Completed. School opened to students in September 2017
Elizabeth	Elizabeth High School - Frank J. Cicarell Academy	Completed. School opened to students in September 2016
Jersey City	PS 20 Elementary School	Completed. School opened to students in September 2016
Keansburg	Joseph C. Caruso Elementary School	Completed. School opened to students in September 2016
Long Branch	George A. Catrambone Elementary School	Completed. School opened to students in September 2014
New Brunswick	A. Chester Redshaw Elementary School	Completed. School turned over to district in November 2014
New Brunswick	Paul Robeson Elementary School	Completed. School turned over to district in November 2018
Newark	Oliver Street Elementary School	Completed. School opened to students in June 2016
Newark	Elliott Street Elementary School	Completed. School opened to students in February 2016
Newark	South Street Elementary School	Completed. School opened to students in September 2018
Paterson	Dr. Hani Awadallah Elementary School	Completed. School opened to students in September 2016
Paterson	PS Number 16 Elementary School	Completed. School opened to students in September 2016
Phillipsburg	Phillipsburg High School	Completed. School opened to students in September 2016
Vineland	Lincoln Avenue Middle School	Completed. School opened to students in September 2018
West New York	Harry L. Bain Elementary School	Completed. School opened to students in September 2017
West New York	Memorial High School	Alternative Delivery Method complete. St. Joseph's H.S. purchased and transferred to district. Science lab renovations delegated to district
		21
East Orange	George Washington Carver Elementary School	Construction
Harrison	Kennedy Elementary School (New ES )	Construction
Irvington	Madison Avenue Elementary School	Construction
Millville	Millville Senior High School	Construction
Passaic City	New Elementary School at Leonard Plane	Construction
Perth Amboy	Seaman Avenue Elementary School	Construction
Pemberton	Alexander Denbo Elementary School	Construction
Trenton	Trenton Central High School	Construction
<b>Total in Construction</b>		<b>8</b>
Plainfield	New Woodland Elementary School	ESP Procurement ongoing (In Design Development - SDA Design Studio)
<b>Total With Early Site Preparation Activities Ongoing</b>		<b>1</b>
Camden	Camden High School	Design-Build Design Phase
Passaic City	Dayton Avenue Elementary School Campus	Design-Build Design Phase
Paterson	New Middle School @ Union Avenue	Design-Build Design Phase
<b>Total in Design Phase of Design-Build Contract</b>		<b>3</b>
Keansburg	Port Monmouth Road School	In Design Development (External Design Consultant)
Orange	Cleveland Street Elementary School	In Design Development (External Design Consultant)
Orange	Orange High School	In Design Development (External Design Consultant)
<b>Total in Design Development with External Design Consultant</b>		<b>3</b>
Perth Amboy	Perth Amboy High School	In Design Development (SDA Design Studio)
Union City	Elementary School Grade Level	In Design Development (SDA Design Studio)
<b>Total in Design Development with SDA Design Studio</b>		<b>2</b>
Hoboken	Demarest Elementary School	In Planning and Scope Development
<b>Total in Planning and Scope Development</b>		<b>1</b>



## Appendix B - Status of Emergent Project Program

SDA-Managed Emergent Projects			
District	School Name	Project Scope	Status
Bridgeton	Bridgeton H.S.	Building Envelope – Roof & Masonry	Design
Camden	Cramer E.S.	Structural	Construction
Newark	Chancellor Avenue E.S.	Structural	Design
Newark	Cleveland E.S.	Building Envelope/ Structural	Scope Development
Newark	Dr. E. Alma Flag E.S.	Building Envelope-Roof & Exterior Doors	Design
Newark	Harriet Tubman E.S.	Building Envelope- Basement Drainage	Design
Newark	Hawkins Street E.S.	Structural- Chimney Repairs	Scope Development
Newark	Ivy Hill E.S.	Building Envelope/ Structural	Scope Development
Newark	Lafayette Street E.S.	Building Envelope-Roof & Exterior Doors	Design
Newark	Luis Munoz Marin M.S.	HVAC	Construction
Newark	Malcolm X. Shabazz H.S.	Structural	Scope Development
Newark	Roberto Clemente E.S.	Building Envelope/ Structural	Scope Development
Newark	Technology H.S.	Building Envelope/ Structural	Scope Development
Newark	Wilson Avenue School	Structural- Chimney Repairs	Scope Development
Paterson	PS 5 E.S.	Exterior Masonry & Roofing	Design
Paterson	Roberto Clemente E.S.	HVAC Electric Issues	Construction
Plainfield	Plainfield H.S.	Building Envelope/ Structural	Design
Plainfield	Plainfield H.S.	Structural - Stairs	Design

District-Managed Emergent Projects			
District	School Name	Project Scope	Status
Camden	Forrest Hill E.S.	Building Envelope - Roofing	Design
Camden	Forrest Hill E.S.	HVAC	Design
Newark	Malcolm X. Shabazz H.S.	Exterior Masonry Repairs	Construction
Newark	Malcolm X. Shabazz H.S.	Roof Investigation & Replacement	Construction
Newark	Newark Vocational	Exterior Masonry Repairs & Roofing Replacement	Construction
Newark	Newark Vocational	Window Investigation & Replacement	Construction
Paterson	PS 19 E.S.	Retaining Walls	Construction
Paterson	PS 9 E.S.	Outdoor Play Area Repairs	Construction

## Appendix C - Number of Minority/Female Work-Hours by Trade

<b>Construction Contracts: Number of Minority/Female Work-Hours by Trade</b> (April 1, 2018 through September 30, 2018)					
Trade	Total Work-Hours	Minority Work-Hours	Minority Work-Hours Percentage	Female Work-Hours	Female Work-Hours Percentage
Asbestos	256	80	31.25%	16	6.25
Carpenter	47,301	8,070	17.06%	34	0.07
Caulking & Waterproofing	1,389	1,357	97.70%	0	0
Concrete/Foundations/Footings	982	369	37.58%	0	0
Dockbuilder	830	323	38.92%	0	0
Dry Wall – All	1,512	1,008	66.67%	0	0
Electrician	98,189	19,911	20.28%	1,205	1.23%
Electrician Teledata/Technician	2,947	1,264	42.89%	96	3.26%
Elevator Constructor	328	0	0	0	0
Elevator Mechanical	55	47	85.45%	0	0
Fireproofing Applications	72	72	100%	0	0
Flooring/Tile Installation	4,702	335	7.12%	0	0
Glazier	6,073	997	16.42%	0	0
HVACR	2,437	361	14.81%	0	0
Insulator	6,428	721	11.22%	0	0
Iron Erector	6,696	1,961	29.29%	64	0.96%
Ironworker	4,201	487	11.59%	0	0
Laborer	80,643	43,377	53.79%	439	0.54%
Masonry/Bricklayer	64,863	17,526	27.02%	30	0.05%
On-Site Supervision	60	0	0	0	0
Operating Engineer	15,037	1,530	10.17%	120	0.80%
Painting – General	14,895	2,113	14.19%	0	0
Pipefitter	28,782	7,369	25.60%	112	0.39%
Plumber	16,571	2,033	12.27%	0	0
Roofer	10,879	3,866	35.54%	0	0
Sheet Metal Worker	16,477	1,528	9.27%	2,468	14.98%
Sheetrock Taper	984	984	100%	168	17.07%
Sprinkler Fitter	8,251	667	8.08%	504	6.11%
Steam Fitter	448	144	32.14%	0	0
Trucker	86	0	0	0	0
<b>TOTALS</b>	<b>442,374</b>	<b>118,500</b>	<b>26.79%</b>	<b>5,256</b>	<b>1.19%</b>

## Appendix D - Cost of Construction Per Square Foot Comparison to MSA

<b>Metropolitan Statistical Area (MSA) Totals</b>				
<b>Cost Per Square Foot Comparison at Bid</b>				
<b>Statistical Brief</b>				
<b>Source</b>	<b>Area</b>	<b>Elementary School</b>	<b>Middle School</b>	<b>High School</b>
<b>McGraw-Hill Metropolitan Statistical Area (MSA)</b> (April 2018 - September 2018)	Philadelphia	\$331	-	\$345
	New York	\$587	\$373	\$387
<b>School Planning &amp; Management</b> by Region 2 State Average <sup>1</sup>	NY, NJ, PA Average	-	-	-
<b>New York City School Construction Authority<sup>^</sup></b> (Dated Sep. 2018 for Fiscal 2018)	New York City	\$737	-	-
<b>SDA Managed Projects<sup>*</sup></b> (April 2018 - September 2018)	Statewide	-	\$295	\$314

*The table represents a statistical cross-section of data from numerous sources with report dates ranging from July 2017 - September 2018. Costs are at time of bid.*

*1 - No Current reporting for Region 2 (for NJ, NY and PA only) as reported by School Planning & Management.*

*<sup>^</sup>Numbers reflect the New York City Mayor's Management Report Dated September 2018. Construction bid price for school capacity projects per square foot.*

*<sup>\*</sup>Cost at Bid for 2 SDA District Projects (Camden - New Camden HS; Paterson - New MS @ Union Ave. Construction costs do not include costs for site construction. (For projects advanced via Design-Build Engagements, design fees included in the bid amount have been deducted to calculate the Construction Cost Per Square Foot).*

The table above provides a comparison of cost per square-foot for new school construction (public schools) within the Philadelphia and New York City Metropolitan Statistical Comparison areas (MSAs). This addresses the August 2007 statutory requirement that the cost of school facilities projects undertaken and funded by the SDA are compared to similar school facilities projects constructed in the New York City and Philadelphia MSAs.

The U.S. Office of Management and Budget is responsible for developing standards for defining the MSAs and for applying these standards with Census data.

The table above also includes information from the School Planning and Management School Construction Report, a recognized national-construction data source, as well as information from the New York City Department of Education School Construction Authority. The use of multiple sources to monitor and analyze construction costs provides assurance that industry-wide pricing trends are addressed.

## Appendix E - School Facilities Construction Bonds and Notes

New Jersey Schools Development Authority EDA School Facilities Construction Bonds and Notes State Fiscal Years 2001–2018					
Fiscal Year	Issue Date	Series	Restricted	Denominations	Principal Amount Issued
2001	04/02/01	A		\$5,000	\$ 500,000,000
<i>Subtotal</i>					\$ 500,000,000
2002	12/28/01	B	QZAB	\$5,000	\$ 8,600,000
<i>Subtotal</i>					\$ 8,600,000
2003	10/16/02	C		\$5,000	\$ 600,000,000
2003	12/30/02	D	QZAB	\$5,000	\$ 29,400,000
2003	03/14/03	E	QZAB	\$5,000	\$ 7,929,000
<i>Subtotal</i>					\$ 637,329,000
2004	08/07/03	F		\$5,000	\$ 600,000,000
2004	01/23/04	G		\$5,000	\$ 650,000,000
2004	05/18/04	H		\$5,000	\$ 300,000,000
<i>Subtotal</i>					\$ 1,550,000,000
2005	08/31/04	I		\$5,000	\$ 250,000,000
2005	08/31/04	J		\$5,000	\$ 500,000,000
2005	04/06/05	L		\$5,000	\$ 150,000,000
2005	04/06/05	M		\$5,000	\$ 500,000,000
<i>Subtotal</i>					\$ 1,400,000,000
2006	10/04/05	O		\$5,000	\$ 750,000,000
2006	12/15/05	P		\$5,000	\$ 175,000,000
2006	12/15/05	Q		\$5,000	\$ 500,000,000
<i>Subtotal</i>					\$ 1,425,000,000
2007	11/02/06	R		\$5,000	\$ 500,000,000
2007	11/02/06	S		\$5,000	\$ 100,000,000
<i>Subtotal</i>					\$ 600,000,000
2008	10/04/07	T		\$5,000	\$ 500,000,000
2008	10/04/07	U		\$5,000	\$ 300,000,000
2008	06/03/08	X		\$5,000	\$ 250,000,000
2008	06/03/08	Y		\$5,000	\$ 200,000,000
<i>Subtotal</i>					\$ 1,250,000,000
2009	01/29/09	Z		\$5,000	\$ 175,000,000
2009	06/18/09	A Notes		\$5,000	\$ 400,000,000
<i>Subtotal</i>					\$ 575,000,000
2010	08/20/09	BB		\$5,000	\$ 200,000,000
2010	05/17/10	CC-1	BAB	\$5,000	\$ 104,115,000
2010	05/17/10	CC-2		\$5,000	\$ 48,910,000
2010	05/17/10	B Notes	BAB	\$2,000	\$ 350,000,000
<i>Subtotal</i>					\$ 703,025,000
2013	10/03/12	G Notes		\$5,000	\$ 119,060,000
2013	10/03/12	H Notes		\$5,000	\$ 119,060,000
2013	10/03/12	KK		\$5,000	\$ 136,880,000
<i>Subtotal</i>					\$ 375,000,000
2014	05/06/14	RR		\$5,000	\$ 60,000,000
<i>Subtotal</i>					\$ 60,000,000
2015	10/17/14	UU		\$5,000	\$ 525,000,000
<i>Subtotal</i>					\$ 525,000,000
2016	08/31/15	WW		\$5,000	\$ 500,000,000
<i>Subtotal</i>					\$ 500,000,000
2017	12/08/16	AAA		\$5,000	\$ 342,850,000
<i>Subtotal</i>					\$ 342,850,000
2018	10/05/17	DDD		\$5,000	\$ 350,000,000
<i>Subtotal</i>					\$ 350,000,000
<b>Grand Total</b>					<b>\$ 10,801,804,000</b>

Note: There were no bond issuances during the reporting period.

## Appendix F - School Facilities Projects Approved by DOE

From April 1, 2018 through September 30, 2018, the New Jersey Department of Education approved two school facilities projects, which were then undertaken and funded by the SDA. Neither of these projects exceeded the Facilities Efficiencies Standards (FES).

<b>School Facilities Projects Approved by DOE</b>				
<b>April 1, 2018 – September 20, 2018</b>				
	<b>Total School Facilities Projects Approved</b>	<b>Required Educational Adequacy/ FES Review</b>	<b>Projects Requiring Educational Adequacy/RES Review &amp; Exceeding the FES*</b>	<b>% of Projects Requiring Educational Adequacy/FES Review and Exceeding the FES</b>
<b>All Districts</b>	619	119	0	0
<b>SDA Managed</b>	2	2	0	0
<b>SDA Districts</b>	68	7	0	0
<b>RODs</b>	549	110	14	12.72%

*Notes: SDA Districts submitted 68 projects for review and approval. These are outside the SDA Managed funding process.*

*\* 12 Projects exceeded the FES during this reporting period due to building more gross square footage than was supported by their unhoused student count.*

*The information included in the table above was provided by the New Jersey Department of Education, Office of School Facilities.*