



New Jersey Schools Development Authority Biannual Report

For the reporting period October 1, 2018 to March 31, 2019

Following is the Biannual Report of the New Jersey Schools Development Authority (SDA) for the period October 1, 2018 through March 31, 2019. This report is submitted under the provisions of P.L. 2007, c. 137 (“The August 2007 legislative amendments”), which modified the Educational Facilities Construction and Financing Act (EFCFA) (P.L. 2000, c.72).

This report summarizes the progress and accomplishments of New Jersey’s school construction program during the six-month reporting period. The New Jersey Schools Development Authority (SDA or the Authority) fully funds and manages the new construction, modernization and renovation of school facilities projects in 31 school districts known as SDA Districts. The Authority also makes grants available to Regular Operating Districts (RODs) throughout New Jersey for facilities projects approved by the NJ Department of Education (DOE).

SDA Mission

Our mission is to deliver high-quality educational facilities that best meet the needs of the students of the State of New Jersey. We promote fiscal responsibility in the management of taxpayers’ resources, while providing efficiently designed facilities that enhance the academic environment,

EXECUTIVE LEADERSHIP

Manuel M. Da Silva

Interim Chief Executive Officer

Roy Garcia

Chief of Staff

Andrew D. Yosha

Chief Operating Officer

Donald R. Guarriello, Jr.

Vice President & Chief Financial Officer

Jane F. Kelly, Esq.

Vice President - Corporate Governance & Legal Affairs

Pamela Luster

Vice President - Administrative Operations

Thomas Schrum

Vice President - Real Estate Services and Predevelopment

TABLE OF CONTENTS

EXECUTIVE LEADERSHIP	2
Breaking Ground to Build 21st Century Schools	5
Preparing Schools for September Openings	7
Preparing Sites for Construction.....	10
Camden High School Construction Begins	11
SDA’s Capital Portfolio	12
Emergent Projects Address Building Conditions	14
Regular Operating District Grants	15
BOLSTERING SMALL BUSINESSES IN NEW JERSEY	16
Continued Training Opportunities for Small Businesses	16
Construction Contracts for Small Businesses.....	17
Prequalified Firms	18
STAKEHOLDER OUTREACH EFFORTS	19
Increased Communications Outreach.....	19
Engaging With Communities and Stakeholders.....	20
SDA FINANCES	21
RECOMMENDATIONS FOR CHANGE.....	22
APPENDIX	23
Appendix A - Status of Capital Portfolio Projects	24
Appendix B – Status of Emergent Project Program	25
Appendix C - Number of Minority/Female Work-Hours by Trade	26
Appendix D - Cost of Construction Per Square Foot Comparison to MSA.....	27
Appendix E - Construction Bonds and Notes	28
Appendix F - School Facilities Projects Approved by DOE	29

SDA BOARD MEMBERS

Public Members



Robert Nixon, Chairman
*Director of Government Affairs,
NJ State Policeman's Benevolent Assn.*



Kevin Egan
Business Representative, I.B.E.W. Local 456



Richard Elbert, AIA
*General Counsel, Americas
Bjarke Ingels Group*



Lester Lewis-Powder
Executive Director, Let's Celebrate, Inc.



Loren P. Lemelle
Retired Executive, Johnson and Johnson



Michael Maloney
*Business Manager/ Financial Secretary,
Plumbers & Pipefitters Local Union No. 9
President, Mercer County Central Labor
Council*



Mario Vargas
Farmers Insurance

Ex-Officio Members



Dr. Lamont Repollet
*Commissioner, New Jersey Department of
Education*



Tim Sullivan
*Chief Executive Officer, New Jersey
Economic Development Authority*



Lt. Governor Sheila Oliver
*Commissioner, New Jersey Department of
Community Affairs*



Elizabeth Maher Muoio
*State Treasurer, New Jersey Department of
the Treasury*



MODERNIZING NEW JERSEY'S EDUCATIONAL INFRASTRUCTURE

Breaking Ground to Build 21st Century Schools

The SDA's fundamental charge is to positively impact the education for thousands of New Jersey's schoolchildren, working in close partnership with the Department of Education and District educational leadership. Through the construction of new and renovated school facilities, the SDA delivers on its core mission to provide high-quality educational facilities that best meet the needs of the students of the State of New Jersey. During the reporting period, the SDA held groundbreaking ceremonies for three projects, highlighting the initial phase of work to provide SDA communities with the educational infrastructure they need to best help their students succeed.



In October 2018, SDA joined **Pemberton** students, staff and local officials to break ground on the new \$58.7 million **Denbo-Crichton Elementary School**. The project will provide a 126,000 square-foot facility for grades Pre-Kindergarten through five in the Pemberton School District. The new school will replace two schools that did not satisfy Facilities Efficiency Standards. The new, modern high-quality building will educate 930 students. The demolition of the Crichton School was completed to allow

for construction of the new school. Upon completion of the new school, the Denbo Elementary School facility will then undergo abatement and demolition.

With shovels in hand in February 2019, the **Millville High School** mascot joined students, staff, SDA officials, local and state officials to celebrate the start of construction of the addition to the west side of the **Millville High School**. While renovation and remediation work at the school preceded this reporting period, the groundbreaking event marked the first of three additions to the school that in total will deliver a facility able to accommodate nearly 2,000 students. The \$137.5 million Millville High School addition/renovation project will consist of approximately 230,000 square-feet of additions and more than 55,000 square-feet of renovations. The approximately 82,000 square-foot addition marked by the groundbreaking will provide 32 classrooms, a cafeteria, faculty dining room, kitchen, two culinary art labs, eight small group instruction rooms, two self-contained special education classrooms and one life skills classroom.



Alongside **Passaic** students, school district officials, State and local officials, the SDA held a groundbreaking in February 2019 to recognize the onset of construction of its largest project to date – the \$240.9 million, 448,000 square-foot **Dayton Avenue Educational Campus**. The campus, which includes four facilities in a unified structure with shared central facilities, will provide a

quality educational environment for approximately 2,760 students in Pre-kindergarten through 8th grade. Altogether, the campus' four facilities will meaningfully address the significant classroom overcrowding that exists in the Passaic School District.

Preparing Schools for September Openings

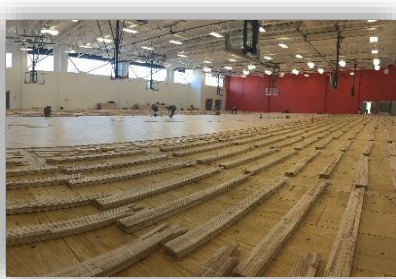
As the construction of school buildings nears completion, the excitement of the surrounding communities, and especially among the students, is palpable. The look on students' faces as they enter their new schools is priceless. Throughout the reporting period, SDA staff and its contractors continued working at a steady pace to ensure new school buildings are ready for September 2019 openings.

Trenton Central High School

One of the most notable and publicized projects that the SDA has undertaken in recent years is the construction of the \$155.4 million Trenton Central High School, a 374,000 square-foot school designed to educate 1,900 students in 10th through 12th grade. The school will include five Small Learning Communities (SLC) and provide Career Technical Education programs related to Health Sciences, Culinary Arts, Construction, Physical Fitness, and Automotive Technology.

By the end of the reporting period, the gymnasium floor and bleachers were installed, the pool was being tiled, work continued on the outdoor amphitheater, outdoor canopies were being installed and interior finish work was ongoing with classrooms receiving finishing touches.

Importantly, the school project also included the salvage and reuse of many items from the original school building, including travertine marble from the original auditorium, columns and porticos from the exterior of the building and WPA mosaics from the front entryway.



Rose M. Lopez Elementary School, Perth Amboy

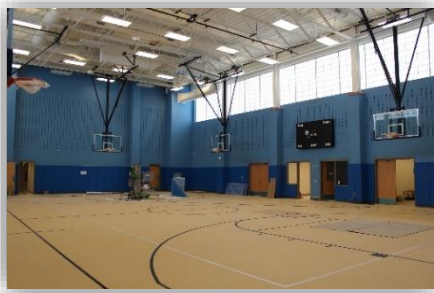
The \$56.4 Million Rose M. Lopez Elementary School in Perth Amboy (formerly known as Seaman Avenue E.S.) will be a new 128,000-square-foot facility designed to educate approximately 800 students in grades kindergarten through five. At the end of the reporting period, work was ongoing on interior finishes, the construction of a soccer field adjacent to the school, finishing the gymnasium and the multipurpose room, as well as work on some of the specialized spaces. This September, students will be greeted with an abundance of natural light, bright and cheerful classrooms and innovative spaces in which they can learn and grow.



The 3-story building will include 38 classrooms, six Small Group Instruction Rooms, four Basic skills/ESL/Resource rooms, a Science Demonstration Room, a speech room, vocal and instrumental music rooms, a computer lab, a gymnasium, a media center, a cafeteria, a multipurpose room with stage, outdoor play and learning areas.

Sonia Sotomayor Elementary School, Passaic

The Sonia Sotomayor E.S. (formerly known as the Leonard Place Elementary School) in Passaic is across the street from the Passaic Gifted and Talented Academy, also delivered by the SDA and opened to students in 2015. Along with the Dayton Avenue Educational Campus (now in construction), the delivery of these much-needed new schools represents a comprehensive approach to help reduce significant overcrowding in Passaic schools.



The \$55.9 million, 105,000 square-foot, three-story Sonia Sotomayor E.S. was designed and constructed to educate approximately 700 students in Kindergarten through 5th grade. It has been outfitted and furnished to support the District's initial need for Kindergarten to 8th grade. At the end of the reporting period, work was ongoing on interior finishes, furniture/fixtures/technology installation and final inspections. When students begin their school-year in September, they will love their new gymnasium, inviting classrooms, science classroom, instrumental and vocal music rooms, an art room, a multipurpose room with stage, a gymnasium, a cafeteria, and a media center.

Madison Avenue E.S., Irvington

The new Madison Avenue Elementary School is being built on the site of the former school, which was demolished by the SDA in 2016. The new 73,000-square-foot elementary school is designed to educate approximately 500 students in pre-kindergarten through 5th grade. In addition to the exceptional classroom spaces that will be available to students this September, the new school has an outdoor play space that includes a basketball/volleyball court and running track.

At the end of the reporting period, work was ongoing on interior finishes, exterior site work such as sidewalks and paving as well as preparation for playground equipment and rubberized play surface.



Preparing Sites for Construction

SDA's efforts to maximize predictable project outcomes during construction of a school actually begin before hiring a contractor to build the school. Often, the SDA utilizes a separate Early Site Preparation contract in order to deliver a site ready for new school construction. This method of separating demolition and site remediation from new school construction helps the SDA to prevent lengthy, costly construction delays often caused by conditions that need to be remedied on the site. Separating the Early Site Preparation contract from the Design-Build contract also provides an opportunity for smaller firms to gain experience working directly for the SDA.

Woodland Avenue Elementary School, Plainfield

One example of an early site preparation contract occurred at the Woodland Avenue Elementary School in Plainfield. During the reporting period, abatement and demolition of the original school and site work activities were ongoing. The Early Site Preparation contract was awarded to Two Brothers Contracting, a Small Business Enterprise. Once the early site preparation activities are completed, the site will be ready for construction of the new three-story, 120,000 square-foot facility that will provide capacity for approximately 840 students in kindergarten through 5th grade.



Camden High School Construction Begins

The Camden High School Panthers moved one step closer to delivery of their new High School during this reporting period with the initiation of work on the site by the Design-Builder. Shortly thereafter, on April 2nd, a notice to proceed was issued to begin the footings and foundation work for the highly anticipated 270,000-square-foot, two-story education complex for more than 1,200 students in 9th through 12th grades. The project includes four small learning communities, a gymnasium, cafeteria, auditorium and media center, among many of its state-of-the-art amenities.



SDA's Capital Portfolio

This reporting period was highlighted by a substantial amount of activity on the SDA's Capital Portfolio projects, including nine projects in construction as of March 31, 2019.

These nine projects will provide more than 11,400 new seats and represent a state investment of \$820.7 million.

SDA Projects in Construction as of March 31, 2019					
District	Project Name	Project Type	Anticipated School Opening	Total Estimated Project Cost	Max Student Capacity
East Orange	Sheila Y. Oliver Academy	New School	September 2020	\$41.2 M	512
Harrison	Kennedy E.S.	New School	September 2020	\$36.1 M	432
Irvington	Madison Avenue E.S.	New School	September 2019	\$38.6 M	504
Millville	Millville Senior H.S.	Addition/Renovation	Phased	\$137.5 M	2,384
Passaic City	Dayton Avenue Educational Campus	New School	September 2022	\$240.9 M	3,020
Passaic City	Sonia Sotomayor E.S.	New School	September 2019	\$55.9 M	698
Pemberton	Denbo-Crichton E.S.	New School	September 2020	\$58.7 M	930
Perth Amboy	Rose M. Lopez E.S.	New School	September 2019	\$56.4 M	804
Trenton	Trenton Central High School	New School	September 2019	\$155.4 M	2,176
9 Schools in construction				\$820.7 M	11,460

In addition to those projects in construction, significant activity occurred on many other projects in the current Capital Portfolio. At the end of the reporting period:

- 21 projects are complete;
- 9 projects are in active building construction;
- 2 projects have initiated the design phase of a design-build contract;
- 2 projects had construction awards approved by the SDA Board;
- 1 project has design services ongoing;
- 1 project is in design-build procurement;
- 1 project is in design procurement; and
- 2 projects are in design development with SDA Design Studio/Bridging Architect (one of these projects is also in the early site preparation phase).

Projects that advanced during the reporting period include the following:

- Epic Management, Inc. received a notice to proceed (NTP), initiating the design portion of a design-build contract, for the new **Union Avenue Middle School in Paterson** that will provide a 163,000 square foot, four-story facility designed to educate 1,000 students in 6th through 8th grade. The school is planned for a September 2021 opening.
- Two Brothers Contracting, Inc. also received a NTP for abatement and selective demolition activities associated with the **Cleveland Street Elementary School project in Orange**.

Additionally, three projects were advertised for procurement:

- Design-build services for the **new Perth Amboy High School** in Perth Amboy, New Jersey. The advertisement had a Construction Cost Estimate (CCE) of \$210-230 Million for the new 576,000, three-story educational facility.
- Construction services for the **Orange High School** addition/renovation project in Orange, New Jersey. The advertisement had a CCE of \$33-37 Million. The project includes a 50,000 square foot addition, construction of a connecting bridge and improvements to the building. An award to Terminal Construction Corp. was approved by the Board at the March 2019 meeting.
- Construction services for the **Cleveland Street Elementary School** in Orange, New Jersey. The advertisement had a CCE of \$12 to 14.5 million. The project includes an 11,500 square foot addition to the existing school and limited

renovations. An award to Brockwell & Carrington Contractors was approved by the Board at the March 2019 meeting.

For a full listing of the status of all Capital Portfolio projects, please see Appendix A. For a comparison of cost per square foot costs, please see Appendix D.

Emergent Projects Address Building Conditions

Through the emergent project program, the SDA continues to address conditions deemed necessary by the New Jersey Department of Education (DOE) due to potential health and safety concerns.

SDA is currently managing 17 emergent projects that represent a \$15.2 million State investment to improve existing buildings in the 31 SDA Districts. At the close of the reporting period, the status of active SDA-managed emergent projects is as follows:

- 2 projects are in construction, and
- 15 projects are in design.

SDA is also providing funding for eight additional emergent projects delegated for management by local school districts. Six projects are currently active and two are in design. For projects that are delegated, the SDA executed a grant agreement with the local school district. The district is then responsible for procuring and managing consultants and contractors. The SDA maintains oversight throughout the process.

For a status list of the SDA Emergent Program, please see Appendix B.

Regular Operating District Grants

Since the inception of the State’s school construction program, the SDA has favorably impacted more than 1,610 school facilities in more than 500 school districts in all 21 counties in New Jersey through the Regular Operating District (ROD) Grant program. With State investment provided through the SDA, these districts have undertaken projects that include school security upgrades, HVAC repairs, roof replacements, significant rehabilitation as well as additions and new schools.

SDA provides grants of at least 40 percent of eligible project costs to local school districts to leverage the local resources that are used to fund these projects. Of the \$3.45 billion in authorized funding for the ROD Grant program, \$2.87 billion has been expended to date and the remaining funding is fully committed for approved projects.

During the reporting period, the SDA executed 3 grants for projects in 2 school districts.

The extent of the positive impact of the SDA’s ROD Grant program is demonstrated by the SDA’s active portfolio of 537 grant projects in 140 school districts throughout the State. At the end of the reporting period, these active projects represent more than \$133 million in state share, allowing for the expenditure of more than \$568 million in total project costs in New Jersey communities.

Regular Operating District Grants Executed (October 1, 2018 - March 31, 2019)				
School District	School Name	Total Project Cost	State Share	Project Description
Montclair	Edgemont E.S.	\$134,585	\$53,834	Toilet room upgrades, including new fixtures, finishes, HVAC and reconfiguration.
Wharton Borough	Alfred C. MacKinnon M.S.	\$430,615	\$208,190	Fire alarm system, hvac in gym, including new elec service, locker room renovations
Wharton Borough	Marie V. Duffy E.S.	\$33,085	\$15,995	New ceramic tile in corridors.

BOLSTERING SMALL BUSINESSES IN NEW JERSEY

Continued Training Opportunities for Small Businesses

The SDA is committed to increasing the active involvement of small, minority, women and veteran-owned business enterprises in the State's school construction program. Our efforts to increase the diversity among our construction partners is not only the right thing to do, but we believe it is good for business.

During the reporting period, the SDA sponsored or participated in various training opportunities that were offered to our universe of Contractor Training Program graduates to increase their business knowledge.

In October 2018, the African American Chamber of Commerce of NJ (AACCNJ) joined the SDA to present a seminar on how to obtain bonding to better position small construction businesses to compete for New Jersey public work contracts. AACCNJ's conducted a two-hour training on the AACCNJ's Bond Readiness Program that detailed the bonding services available to eligible firms.

In March 2019, SDA's Safety Division presented a 30-Hour OSHA training course to SDA employees and several of SDA's SMWBE Contractor Training program graduates. Following the completion of the training, participants received a certified 30-Hour OSHA training card.

The SDA will continue to offer opportunities to New Jersey small businesses that will help them grow and compete for work on New Jersey's school construction projects.

Construction Contracts for Small Businesses

The goal of the SDA's Small Business Enterprise (SBE) program is to ensure that at least 25% of the total dollar value of all publicly advertised contracts awarded by the SDA during a fiscal year goes to SBEs. The SDA requires consultants and prime contractors to make good-faith efforts to identify and hire available SBE sub-consultants and SBE subcontractors and to award at least 25% of the total contract value to them. The SDA consistently meets or exceeds this goal as reflected in the 40.31% total achieved during this reporting period.

SDA Contract Awards to Small Business Enterprises (October 1, 2018 – March 31, 2019)	
Total SDA Contracts	\$11,863,399
Total SBE Contracts (inclusive of MBE, SMWBE contracts)	\$4,782,028
Percentage of SDA Contracts Awarded to SBEs	40.31%

The SDA biannually compiles information on the number of school construction contracts awarded by the Authority to women and minority contractors. This information includes the total value of these contracts and the percentage that they represent of all SDA school facilities projects that have entered into construction during the reporting period.

This reporting period, SBE/women-owned businesses received \$1,605,208 or 13.53% of SDA total construction contracts awarded. This reporting period, MBE/minority-owned business received \$74,810 or 0.63%.

SDA also tracks view the breakdown of minority/female work hours by trade. To view this information please see Appendix C.

Prequalified Firms

The SDA is required to maintain a Contractor Prequalification system. All prime bidders and required subcontractors as identified in the bid advertisement shall be classified by New Jersey Department of Treasury, Division of Property Management and Construction (DPMC) and prequalified by SDA at the time of the bid proposal. Therefore, the SDA encourages contractors looking to do business with the SDA to become prequalified.

As of March 31, 2019, there were 1,661 firms prequalified to do business with the SDA. Of those firms:

- 762 (46%) are certified as SBE firms
- 80 (5%) are certified as MBE firms
- 104 (6%) are certified as WBE firms
- 14 (1%) are certified as VOB firms
- 1 (.5%) are certified as DVOB firms

In the six-month reporting period, the SDA prequalified 35 initial or new firms, processed 339 renewals and 36 revisions to existing prequalifications.

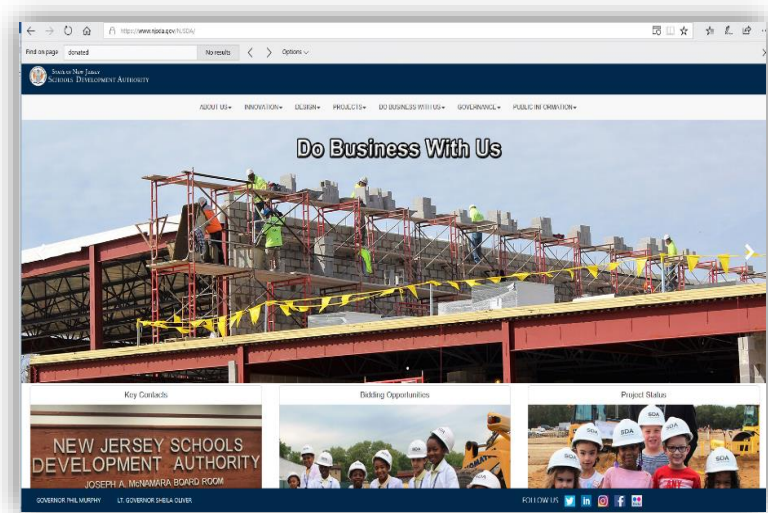
STAKEHOLDER OUTREACH EFFORTS

Increased Communications Outreach

During the reporting period, SDA professionals worked to further strengthen stakeholder involvement and enhance community awareness of SDA activities regarding new state-of-the-art schools in the State of New Jersey and the impact that these facilities have on their surrounding neighborhoods.

SDA developed necessary updating of our social media pages during the reporting period, providing a more complete approach for increasing awareness and interaction with stakeholders through these platforms. Utilization of such engagement tools has allowed the SDA to relay real-time information regarding projects and activities of the Authority, leading to greater transparency of Authority-wide activities and accomplishments.

In addition, the SDA continued to make updates to the SDA website to better interface with the various stakeholder groups looking for information about our projects. This includes contractors, consultants, school district officials, parents and community members. Website updates included making the website more mobile/user friendly, update PDF links to HTML coded webpages, reducing and renaming webpage sections, among others.



The Communications Department will continue to look for opportunities to make information more readily accessible and available to New Jersey stakeholders.

Engaging With Communities and Stakeholders

The SDA has always strived to engage with the communities and stakeholders in the 31 SDA Districts and the State of New Jersey at large. SDA takes very seriously the responsibilities entrusted to it as well as the accountability to community stakeholders, the taxpayers of New Jersey and the contracting community.

The SDA focused on getting input and feedback from the community through the implementation of expanded community information sessions in the communities where a new school is about to be constructed. The first of these meetings was held in Camden in December 2018. SDA, Mayor Frank Moran, Camden School District, project team members, the Department of Education and the Department of Labor were present to provide information about the Camden High School project and answer questions. Attendees were able to view renderings, hear about the spaces that will be available and learn about opportunities for small businesses on the project.

A meeting was also held in Plainfield in January to discuss the upcoming construction of the Woodland Avenue Elementary School and another was held in Passaic in April to discuss the Dayton Avenue Education Campus.

SDA FINANCES

In total, the New Jersey State Legislature has authorized \$12.5 billion in funding for SDA projects (\$8.9 billion for SDA Districts, \$3.45 billion for RODs and \$150 million for vocational schools). Since the program's inception through the end of the reporting period, the amount of bonds issued to fund the program equals \$11.152 billion, including \$350 million issued in November 2018. For a listing of bond issuances to date, please see Appendix E.

As of March 31, 2019, SDA had approximately \$465 million in cash on hand, having disbursed \$183 million during the reporting period.

The SDA is committed to protecting the limited resources allocated by New Jersey taxpayers for SDA school construction projects throughout the State. Therefore, when the need for cost recovery efforts presents itself or an opportunity or cost mitigation exists, the SDA is sure to act.

In November 2018, the SDA received payment of \$750,000 in settlement of cost recovery litigation brought by the SDA against the design consultant, a design sub-consultant and the Project Management Firm arising from alleged roofing system design defects relating to the Egg Harbor Township High School project.

In addition, between October 1, 2018 and March 31, 2019, the SDA resolved \$1,174,289 in contract claims for a total settlement amount of \$637,606.

RECOMMENDATIONS FOR CHANGE

As New Jersey's educational infrastructure continues to age, capital improvement needs throughout the state are increasing. While the SDA has full funding available for the projects currently in the SDA Capital Program forecast, additional funding is needed to fulfill our constitutionally mandated mission of building new schools and improving existing ones in our 31 SDA Districts.

Based upon the DOE's 2016 Educational Facilities Needs Assessment (EFNA), an updated EFNA received in early 2019, the current Capital Plan projects that are advancing through SDA and the current inventory of buildings in SDA Districts – which include more than 7 million square feet of building stock that is more than 91 years old – we expect that needs continue to exist in SDA district school facilities.

APPENDIX

Appendix A - Status of Capital Portfolio Projects

Appendix B - Status of Emergent Project Program

Appendix C - Number of Minority/Female Work-Hours by Trade

Appendix D - Cost of Construction Per Square Foot Comparison to MSA

Appendix E - School Facilities Construction Bonds and Notes

Appendix F - School Facilities Projects Approved by DOE

Appendix A - Status of Capital Portfolio Projects

Status of Capital Project Portfolio as of March 31, 2019		
SDA Capital Portfolio		
School District	School Name	Status
Bridgeton	Buckshutem Elementary School	Completed. School opened to students in September 2016
Bridgeton	Quarter Mile Lane Elementary School	Completed. School opened to students in September 2017
Elizabeth	New ES @ Halloran PS #22 ES site	Completed. School opened to students in September 2017
Elizabeth	Elizabeth High School - Frank J. Cicarell Academy	Completed. School opened to students in September 2016
Garfield	James Madison ES	Completed. School opened to students in September 2018
Gloucester City	Gloucester City Middle School	Completed. School opened to students in September 2017
Jersey City	Patricia M. Noonan ES (ES 3)	Completed. School opened to students in September 2017
Jersey City	Dr. Maya Angelou PS #20	Completed. School opened to students in September 2016
Keansburg	Joseph C. Caruso Elementary School	Completed. School opened to students in September 2016
Long Branch	George A. Catrambone Elementary School	Completed. School opened to students in September 2014
New Brunswick	A. Chester Redshaw Elementary School	Completed. School turned over to district in November 2014
New Brunswick	Paul Robeson Elementary School	Completed. School turned over to district in November 2018
Newark	Oliver Street Elementary School	Completed. School opened to students in June 2016
Newark	Elliott Street Elementary School	Completed. School opened to students in February 2016
Newark	South Street Elementary School	Completed. School opened to students in September 2018
Paterson	Dr. Hani Awadallah Elementary School	Completed. School opened to students in September 2016
Paterson	PS Number 16 Elementary School	Completed. School opened to students in September 2016
Phillipsburg	Phillipsburg High School	Completed. School opened to students in September 2016
Vineland	Lincoln Avenue Middle School	Completed. School opened to students in September 2018
West New York	Harry L. Bain Elementary School	Completed. School opened to students in September 2017
West New York	Memorial High School	Alternative Delivery Method complete. St. Joseph's H.S. purchased and transferred to district. Science lab renovations delegated to district
		21
East Orange	George Washington Carver Elementary School	Construction
Harrison	Kennedy Elementary School (New ES)	Construction
Irvington	Madison Avenue Elementary School	Construction
Millville	Millville Senior High School	Construction
Passaic City	Sonia Sotomayor Elementary School	Construction
Passaic City	Dayton Avenue School Campus	Construction
Perth Amboy	Rose M. Lopez Elementary School	Construction
Pemberton	Alexander Denbo Elementary School	Construction
Trenton	Trenton Central High School	Construction
Total in Construction		9
Plainfield	New Woodland Elementary School	ESP Procurement ongoing (In Design Development - SDA Design Studio)
Total With Early Site Preparation Activities Ongoing		1
Orange	Cleveland Street Elementary School	Construction award Approved by SDA Board
Orange	Orange High School	Construction award Approved by SDA Board
Total with Construction award approved by SDA Board		2
Camden	Camden High School	Design-Build Design Phase
Paterson	New Middle School @ Union Avenue	Design-Build Design Phase
Total in Design Phase of Design-Build Contract		2
Keansburg	Port Monmouth Road School	In Design Development (External Design Consultant)
Total in Design Development with External Design Consultant		1
Perth Amboy	Perth Amboy High School	In Design Development (SDA Design Studio)
Total in Procurement for Design-Build Services		1
Union City	Elementary School Grade Level	In Design Development (SDA Design Studio)
Total in Design Development with SDA Design Studio		1
Hoboken	Demarest Elementary School	In Planning and Scope Development
Total in Design Consultant Procurement		1

Appendix B – Status of Emergent Project Program

SDA-Managed Emergent Projects			
District	School Name	Project Scope	Status
Bridgeton	Bridgeton H.S.	Building Envelope – Roof & Masonry	Design
Newark	Chancellor Avenue E.S.	Structural	Design
Newark	Cleveland E.S.	Building Envelope/ Structural	Design
Newark	Dr. E. Alma Flagg E.S.	Building Envelope-Roof & Exterior Doors	Design
Newark	Harriet Tubman E.S.	Building Envelope- Basement Drainage	Design
Newark	Hawkins Street E.S.	Structural- Chimney Repairs	Design
Newark	Ivy Hill E.S.	Building Envelope/ Structural	Design
Newark	Lafayette Street E.S.	Building Envelope-Roof & Exterior Doors	Design
Newark	Luis Munoz Marin M.S.	HVAC	Construction
Newark	Malcolm X. Shabazz H.S.	Structural	Design
Newark	Roberto Clemente E.S.	Building Envelope/ Structural	Design
Newark	Technology H.S.	Building Envelope/ Structural	Design
Newark	Wilson Avenue School	Structural- Chimney Repairs	Design
Paterson	PS 5 E.S.	Exterior Masonry & Roofing	Design
Paterson	Roberto Clemente E.S.	HVAC Electric Issues	Construction
Plainfield	Plainfield H.S.	Building Envelope/ Structural	Design
Plainfield	Plainfield H.S.	Structural - Stairs	Design

District-Managed Emergent Projects			
District	School Name	Project Scope	Status
Camden	Forrest Hill E.S.	Building Envelope - Roofing	Design
Camden	Forrest Hill E.S.	HVAC	Design
Newark	Malcolm X. Shabazz H.S.	Exterior Masonry Repairs	Construction
Newark	Malcolm X. Shabazz H.S.	Roof Investigation & Replacement	Construction
Newark	Newark Vocational	Exterior Masonry Repairs & Roofing Replacement	Construction
Newark	Newark Vocational	Window Investigation & Replacement	Construction
Paterson	PS 19 E.S.	Retaining Walls	Construction
Paterson	PS 9 E.S.	Outdoor Play Area Repairs	Construction

Appendix C - Number of Minority/Female Work-Hours by Trade

Minority/Female Work Hours By Trade (10/1/18-3/31/19)					
Trade	Total Work Hours	Minority Work Hours	Minority % Work Hours	Female Work Hours	Female % Work Hours
Asbestos Removal/Treatment Workers	5,973	3,784	63.35%	519	8.69%
Carpenter	56,167	10,573	18.82%	8	.01%
Caulking & Waterproofing	1,463	1,291	88.24%	0	0
Concrete/Foundation/Footings	6,005	2,431	40.48%	0	0
Demolition	1,586	570	35.94%	103	6.49%
Dockbuilder	6,433	1,055	16.40%	0	0
Dry Wall – All	1,406	1,094	77.81%	0	0
Electrician	76,951	15,623	20.30%	2,036	2.65%
Elevator Constructor	2,015	0	0	0	0
Fencing	84	84	100%	0	0
Flooring/Tile Installation	8,693	848	9.75%	0	0
Glazier	4,923	550	11.17%	0	0
HVACR	5,407	915	16.92%	0	0
Insulation – All	3,323	1,268	38.16%	0	0
Iron Erector	6,612	627	9.48%	24	0.36%
Ironworker	12,247	3,031	24.75%	152	1.24%
Laborer	59,513	28,809	48.41%	398	0.67%
Masonry/Bricklayer	35,084	10,987	31.32%	80	0.23%
On-Site Supervision	44	0	0	0	0
Operating Engineer	12,789	873	6.82%	273	2.13%
Painting – General	9,149	1,725	18.85%	0	0
Pipefitter	9,572	807	8.43%	0	0
Plumber	20,552	2,956	14.38%	0	0
Roofing – All	7,045	2,539	36.04%	46	0.65%
Sheet Metal Worker	12,005	2,822	23.51%	345	2.87%
Sheetrock Taper	203	171	84.24%	0	0
Spackler	16	16	100%	0	0
Sprinkler Fitter	4,302	8	0.19%	0	0
Tree Removal	16	16	100%	0	0
Total	369,587	95,473	25.83%	3,984	1.08%

Appendix D - Cost of Construction Per Square Foot Comparison to MSA

Metropolitan Statistical Area (MSA) Totals				
Cost Per Square Foot Comparison at Bid				
Statistical Brief				
Source	Area	Elementary School	Middle School	High School
McGraw-Hill Metropolitan Statistical Area (MSA) (October 2018 - March 2019)	Philadelphia	\$190	-	\$725
	New York	\$342	\$375	\$1,261
School Planning & Management by Region 2 State Average¹	NY, NJ, PA Average	-	-	-
New York City School Construction Authority[^] (Dated Sep. 2018 for Fiscal 2018)	New York City	\$737	-	-
SDA Managed Projects* (October 2018 - March 2019)	Statewide	\$302	-	\$170

The table represents a statistical cross-section of data from numerous sources with report dates ranging from April 2018 - March 2019. Costs are at time of bid.

1 - No Current reporting for Region 2 (for NJ, NY and PA only) as reported by School Planning & Management.

[^]Numbers reflect the New York City Mayor's Management Report Dated September 2018. Construction bid price for school capacity projects per square foot.

**Cost at Bid for 2 SDA District Projects (Orange - Orange High School Addition/Renovation; Orange - Cleveland Street Elementary School Addition/Renovation). Construction costs do not include costs for site construction. (For projects advanced via Design-Build Engagements, design fees included in the bid amount have been deducted to calculate the Construction Cost Per Square Foot).*

Appendix E - Construction Bonds and Notes

New Jersey Schools Development Authority EDA School Facilities Construction Bonds and Notes State Fiscal Years 2001–2019					
Fiscal Year	Issue Date	Series	Restricted	Denominations	Principal Amount Issued
2001	04/02/01	A		\$5,000	\$ 500,000,000
<i>Subtotal</i>					<i>\$ 500,000,000</i>
2002	12/28/01	B	QZAB	\$5,000	\$ 8,600,000
<i>Subtotal</i>					<i>\$ 8,600,000</i>
2003	10/16/02	C		\$5,000	\$ 600,000,000
2003	12/30/02	D	QZAB	\$5,000	\$ 29,400,000
2003	03/14/03	E	QZAB	\$5,000	\$ 7,929,000
<i>Subtotal</i>					<i>\$ 637,329,000</i>
2004	08/07/03	F		\$5,000	\$ 600,000,000
2004	01/23/04	G		\$5,000	\$ 650,000,000
2004	05/18/04	H		\$5,000	\$ 300,000,000
<i>Subtotal</i>					<i>\$ 1,550,000,000</i>
2005	08/31/04	I		\$5,000	\$ 250,000,000
2005	08/31/04	J		\$5,000	\$ 500,000,000
2005	04/06/05	L		\$5,000	\$ 150,000,000
2005	04/06/05	M		\$5,000	\$ 500,000,000
<i>Subtotal</i>					<i>\$ 1,400,000,000</i>
2006	10/04/05	O		\$5,000	\$ 750,000,000
2006	12/15/05	P		\$5,000	\$ 175,000,000
2006	12/15/05	Q		\$5,000	\$ 500,000,000
<i>Subtotal</i>					<i>\$ 1,425,000,000</i>
2007	11/02/06	R		\$5,000	\$ 500,000,000
2007	11/02/06	S		\$5,000	\$ 100,000,000
<i>Subtotal</i>					<i>\$ 600,000,000</i>
2008	10/04/07	T		\$5,000	\$ 500,000,000
2008	10/04/07	U		\$5,000	\$ 300,000,000
2008	06/03/08	X		\$5,000	\$ 250,000,000
2008	06/03/08	Y		\$5,000	\$ 200,000,000
<i>Subtotal</i>					<i>\$ 1,250,000,000</i>
2009	01/29/09	Z		\$5,000	\$ 175,000,000
2009	06/18/09	A Notes		\$5,000	\$ 400,000,000
<i>Subtotal</i>					<i>\$ 575,000,000</i>
2010	08/20/09	BB		\$5,000	\$ 200,000,000
2010	05/17/10	CC-1	BAB	\$5,000	\$ 104,115,000
2010	05/17/10	CC-2		\$5,000	\$ 48,910,000
2010	05/17/10	B Notes	BAB	\$2,000	\$ 350,000,000
<i>Subtotal</i>					<i>\$ 703,025,000</i>
2013	10/03/12	G Notes		\$5,000	\$ 119,060,000
2013	10/03/12	H Notes		\$5,000	\$ 119,060,000
2013	10/03/12	KK		\$5,000	\$ 136,880,000
<i>Subtotal</i>					<i>\$ 375,000,000</i>
2014	05/06/14	RR		\$5,000	\$ 60,000,000
<i>Subtotal</i>					<i>\$ 60,000,000</i>
2015	10/17/14	UU		\$5,000	\$ 525,000,000
<i>Subtotal</i>					<i>\$ 525,000,000</i>
2016	08/31/15	WW		\$5,000	\$ 500,000,000
<i>Subtotal</i>					<i>\$ 500,000,000</i>
2017	12/08/16	AAA		\$5,000	\$ 342,850,000
<i>Subtotal</i>					<i>\$ 342,850,000</i>
2018	10/05/17	DDD		\$5,000	\$ 350,000,000
<i>Subtotal</i>					<i>\$ 350,000,000</i>
2019	11/28/18	EEE		\$5,000	\$ 350,000,000
<i>Subtotal</i>					<i>\$ 350,000,000</i>
Grand Total					\$ 11,151,804,000

Appendix F - School Facilities Projects Approved by DOE

From October 1, 2018 through March 31, 2019, the New Jersey Department of Education approved one school facility project, which was then undertaken and funded by the SDA. No projects exceeded the Facilities Efficiencies Standards (FES).

School Facilities Projects Approved by DOE				
October 1, 2018 – March 31, 2019				
	Total School Facilities Projects Approved	Required Educational Adequacy/ FES Review	Projects Requiring Educational Adequacy/RES Review & Exceeding the FES*	% of Projects Requiring Educational Adequacy/FES Review and Exceeding the FES
All Districts	63	27	0	0
SDA Districts	1	1	0	0
RODs	62	26	0	0

Note: An “Other Capital” project is a project that is either not eligible or not seeking State funding support. The DOE approved 19 “Other Capital” projects for SDA Districts. These are outside the SDA-Managed funding process and not reflected in the table above. The DOE approved 255 “Other Capital” projects for ROD’s. These projects are not reflected in the table above.

Note: The information included in the table above was provided by the New Jersey Department of Education, Office of School Facilities.