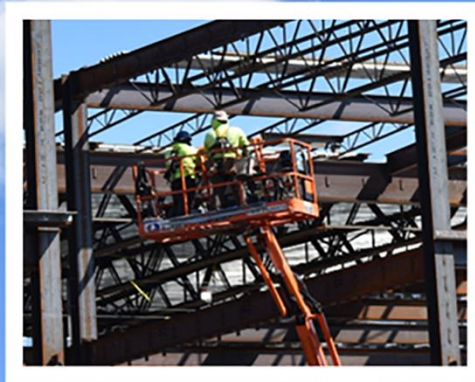
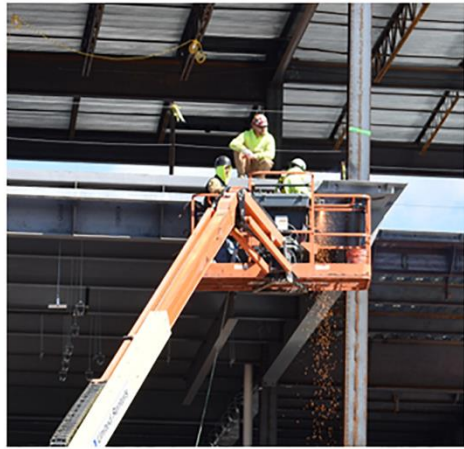


SDA

BIANNUAL REPORT



For the Reporting Period of October 1, 2021 - March 31, 2022

The New Jersey Schools Development Authority (SDA or the Authority) fully funds and manages the new construction, modernization and renovation of school facilities projects in 31 school districts known as SDA Districts. The Authority also makes grants available to Regular Operating Districts (RODs) throughout New Jersey for facilities projects approved by the New Jersey Department of Education (DOE).

SDA MISSION

Our mission is to deliver high-quality educational facilities that best meet the needs of the students of the State of New Jersey. While providing efficiently designed facilities that enhance the academic environment, we promote fiscal responsibility in the management of taxpayers' resources.

SDA EXECUTIVE STAFF



Manuel M. Da Silva
Chief Executive Officer



Donald R. Guarriello
*Vice President and Chief
Financial Officer*



Jane F. Kelly
*Vice President – Corporate
Governance and
Legal Affairs*

SDA BOARD MEMBERS

Public Members



Robert Nixon, Chairman
*Director of Government Affairs,
NJ State Policeman's Benevolent Assn.*



Richard Elbert, AIA
*General Counsel, Americas
Bjarke Ingels Group*



Daniel Gumble
*Business Representative, I.B.E.W. Local
164*



Lester Lewis-Powder
Executive Director, Let's Celebrate, Inc.



Michael Maloney
*Business Manager/ Financial Secretary,
Plumbers & Pipefitters Local Union No. 9
President, Mercer County Central Labor
Council*



Mario Vargas
*Broker/Owner
Senior Health Navigators, LLC.*

Ex-Officio Members



Angelica Allen-McMillan, Ph.D.
*Acting Commissioner, New Jersey
Department of Education*



Tim Sullivan
*Chief Executive Officer, New Jersey
Economic Development Authority*



Lt. Governor Sheila Oliver
*Commissioner, New Jersey Department of
Community Affairs*



Elizabeth Maher Muoio
*State Treasurer, New Jersey Department of
the Treasury*

TABLE OF CONTENTS

SDA EXECUTIVE STAFF	2
SDA BOARD MEMBERS	3
MESSAGE FROM THE BOARD CHAIRMAN & THE CHIEF EXECUTIVE OFFICER	5
SCHOOL CONSTRUCTION THROUGHOUT THE STATE	7
Capital Projects	7
<i>Upcoming Fall School Deliveries</i>	8
<i>Construction Activities Ongoing Statewide</i>	9
<i>Capital Portfolio Expansion</i>	15
Emergent Program	15
ROD Grants	17
\$75 MILLION FY2022 GRANT FUNDING	18
Flooring Initiative	19
Metropolitan Statistical Comparison	19
School Facilities Projects Approved by DOE	20
BENEFITTING NEW JERSEY BUSINESSES	22
Training Small Businesses to do Business with SDA	22
SDA Projects Create Jobs for New Jersey’s Construction Industry	23
Small Business Goals	23
Minority/Female Workforce Hours	24
SDA FINANCES	26

MESSAGE FROM THE BOARD CHAIRMAN & THE CHIEF EXECUTIVE OFFICER



Robert Nixon, Board Chairman

We are pleased to present the Biannual Report of the New Jersey Schools Development Authority (SDA) for the period October 1, 2021 through March 31, 2022. This report is submitted under the provisions of P.L. 2007, c. 137 and summarizes the progress and accomplishments of New Jersey's school construction program during the six-month reporting period.



Manuel Da Silva, CEO

This time has continued to be challenging for SDA's contracting partners due to wide-spread construction industry supply-chain shortages. Despite this, the Authority continues to advance our important work. To this end, we work collaboratively with our construction partners to find creative ways to re-sequence activities when appropriate, and ensure that we remain a steady source of economic opportunity for New Jersey's construction workforce.

This reporting period was marked by significant construction progress on Capital projects around the state, including several that are on track to open in fall 2022. In addition, one SDA Capital project, following an early project delivery, employed a soft opening in January 2022 months ahead of schedule, in anticipation of full occupancy this fall. Projects in Keansburg, Millville and Orange remain on track for fall deliveries as well.

Our Emergent Project Program continues to provide needed funding to address potential health and safety conditions identified in school facilities, often due to the State's aging educational infrastructure. Through our partnerships with local districts we are able to maintain and upgrade aging schools so that existing facilities will be able to safely educate students for years to come. At the end of the reporting period, SDA was managing 17 of these projects.

The SDA also continues to move forward with closing out Regular Operating District Grants as well as administering the new FY 2022 \$75 million grant program. Following approval of the FY 2022 budget, the SDA worked expeditiously to administer the \$75 million grant program that was announced by the Governor to benefit SDA and ROD Districts. These funds allowed school districts to make important and necessary improvements to their school facilities.

This biannual report also highlights both our training of small, women, minority, veteran and veteran-owned businesses as well as the SDA's actual contract awards to small business enterprises. We pride ourselves on our efforts to engage with New Jersey's small businesses and encourage their participation in the State's school construction program.

The importance of suitable educational facilities for New Jersey students cannot be overstated. The educational spaces and resources provided by the SDA can be transformative for our State's youngest citizens as they embark on a lifetime of learning. The processes we have put in place, the good work of our dedicated staff, and the excellence demonstrated by our partners in the trades and contracting communities have resulted in an improved school landscape throughout New Jersey.

The Authority's Board of Directors as well as the experienced and talented staff of the SDA remain resolute in our determination to continue to deliver high-quality educational facilities that best meet the needs of New Jersey's students. We are thankful for the support of the Administration as well as State and local officials who see firsthand the positive impact the State's school construction program has on their communities. We look forward to our continued partnership with the Administration, the Legislature and our stakeholders as we strive to further reduce school overcrowding and ensure broad student access to safe and educationally adequate school facilities.

SCHOOL CONSTRUCTION THROUGHOUT THE STATE

Capital Projects

Ribbon Cutting Ceremonies Celebrate Openings

The SDA opened two new schools and two additions in September 2021. Two of those school districts waited to hold their celebratory ribbon cuttings until later in the school year with the result that they took place during this reporting period.



On December 14, SDA joined Paterson School District, State and local officials, and the Taub Family for a ribbon cutting ceremony for the new, 163,000 square-foot **Joseph A. Taub Middle School in Paterson**. The District named the school after Joseph A. Taub who was born and raised in Paterson where he attended Paterson’s Public Schools. He developed many youth programs to benefit the children of Paterson, including the Taub-Doby Basketball League in 1985. The school will accommodate approximately 1,100 students in grades six to eight and includes 36 classrooms, 6 small group instruction rooms, 9 science labs, an aquaponics lab, a vocal and instrumental music lab, a computer lab, a gymnasium, a media center, a cafeteria with stage, 3 art rooms, and outdoor recreational space.

Shortly thereafter, on December 17, 2021, SDA joined Orange School District leaders and students at a ribbon cutting ceremony for the new addition to the **Orange High School**. The event kicked off with an energetic performance by the Orange High School Marching Band to celebrate the 50,000 square-foot addition that includes a media center filled with

natural light, an Auxiliary gym, technology labs, a robotics lab, art studios, a drama classroom and 15 general classrooms. Renovation work continued on this school into this reporting period, as scheduled.

Upcoming Fall School Deliveries

Throughout the reporting period, SDA continued its work on schools that remain on schedule for openings in fall 2022. The SDA anticipates opening one new school, one major addition/renovation and the final phase of two additional projects this fall. Combined, these projects will provide more than 6,600 new seats and 561,500 square-feet of new construction to aid in student learning. They represent a state investment of more than \$458 million in total project costs.

The fall openings will include the new **Passaic Dayton Avenue Educational Campus**, which will be home to 4 individual schools within one unified structure. This unique project will allow for the education of 3,000 students in Pre-Kindergarten through the eighth grade with the Abraham Lincoln School (Pre-Kindergarten program), the Mahatma Gandhi Elementary School (Elementary School), the Ellen Ochoa Gifted and Talented Academy (Magnet School program) and the Muhammad Ali School (Middle School). The four schools will be located in a unified structure with shared central facilities. During the reporting period, the Passaic Dayton Avenue Educational Campus received a temporary certificate of occupancy (TCO) in November 2021 and facilitated a soft opening for the Abraham Lincoln School in January. The remaining spaces will be occupied in the fall of 2022.

The **Keansburg Port Monmouth Road School** project includes an approximately 27,500 square-foot addition to the existing school facility and will include 13 Pre-Kindergarten classrooms, a food service area, nurse's area, support facilities and a connection to the existing facility. The addition will allow the SDA to add 315 student seats to the school, eliminating the temporary trailers currently located at the front of the existing building. The renovation work to the existing facility includes eight Pre-Kindergarten classrooms, a gross motor skills area, and two new playgrounds. At the end of March 2022, interior

mechanical, electrical and plumbing rough-in work was underway in the new addition and renovation area of the building.

The **Orange High School** project is a multi-phase project. Last fall, the SDA opened an addition to the building, delivering 50,000 square-feet of new construction that included a media center, an auxiliary gymnasium, technology labs, a robotics lab, art studios, a drama classroom and 15 general classrooms. This fall, SDA is on target to deliver the final phase of the project, which will provide a new two-story cafeteria and a connector bridge that will link the Orange High School with the Orange Preparatory Academy. At the end of the reporting period, the SDA had completed the structural steel work for the connector bridge and work to enclose the bridge was ongoing. In addition, renovations to the existing high school were ongoing.

The **Millville Senior High School** project is a multi-phase, multi-year project. Last fall, the SDA opened the second addition to the building, delivering 100,000 square-feet of new construction. This fall, SDA is on target to deliver the final phase of the project which will provide an approximately 9,000 square-foot South addition and an approximately 27,000 square-foot new auditorium. This phase of the project also includes renovations of seven classrooms, two small group instruction rooms, and nine specialty classrooms (a woodshop, a construction lab, an engineering lab, a textile lab, a CAD lab, a computer lab, a technology lab, a driver's education room, and a journalism lab). During the reporting period, the SDA completed footings and foundation work and began the installation of structural steel for the addition.

Construction Activities Ongoing Statewide

This reporting period was highlighted by a substantial amount of activity on the SDA's Capital Portfolio projects, including six projects in construction as of March 31, 2022. These six projects in construction (including several that will open this fall) will provide more than 8,850 new seats once completed and represent a state investment of \$594 million.

The largest project ever undertaken by the SDA continued at a rapid pace throughout the reporting period. Steel erection for the new 576,000 square-foot **Perth Amboy High School** was nearly complete by the end of the reporting period. With the steel structure nearly in place, work to enclose the building (exterior walls, masonry, roofing) has commenced. Upon delivery, this facility will provide 3,300 students in the ninth to twelfth grades with the educational spaces they need and deserve. In addition to general classrooms and science labs, the school will include specialized educational spaces such as an automotive lab, culinary arts lab, black box studio, dance studio, ROTC classroom, world languages classroom, life skills lab, and a daycare center.

Construction of the approximately 120,000 square-foot **Charles and Anna Booker School** in Plainfield includes a new, three-story facility designed to educate a maximum of 840 Kindergarten to fifth grade students. The new school will include 41 classrooms, an art room, a vocal/music room, an instrumental lesson room, a technology lab, a science demo room, a computer lab, a gymnasium, a cafeteria, a media center, a playground, and a basketball court.

Due to impacts resulting from supply chain issues (a challenge for the construction industry as a whole), the timeline for the Charles and Anna Booker School opening has shifted to a September 2023 opening. Supply chain issues are impacting material availability for this project-- specifically material shortages related to concrete masonry units. General delays associated with these materials have pushed a typical 7-8 month masonry construction installation for a project of this size to a 15 month timeframe instead.

The **Orange Cleveland Street Elementary School** project includes an 11,600 square-foot addition to the 100+ year-old existing facility which was built in the 1890's. The addition will include 15 classrooms and a multi-purpose room with a stage. This project also comprises 38,775 square-feet of renovations/alterations to the existing facility, work which was preceded by substantial asbestos abatement activities. The renovations include converting the basement areas to provide a main office, a media center, an art room, a music room, a science room, and a computer instructional area. Due to unforeseen circumstances that impeded the contractor's ability to perform, the SDA

moved forward with a termination for convenience during the reporting period. As a result, the SDA must rebid the construction contract in order to complete the project.

SDA Projects in Construction as of March 31, 2022				
District	Project Name	Project Type	Total Estimated Project Cost	Max Student Capacity
Keansburg	Port Monmouth Road	Addition/Renovation	\$28.4 M	318
Millville	Millville Senior H.S.	Addition/Renovation	\$137.5 M	2,384
Orange	Cleveland Street E.S.	Addition/Renovation	\$33.2 M	348
Orange	High School	Addition/Renovation	\$51.9 M	1,694
Perth Amboy	High School	New School	\$283.8 M	3,295
Plainfield	Charles and Anna Booker School	New School	\$59.4M	830
6 Schools in construction			\$594.2 M	8,869

In addition to the projects in construction highlighted here, activity also continued on the remaining projects in SDA’s Capital Portfolio.

Early site work was ongoing for the new **Grade 7 through 9 School in Union City**. The new school will be designed and constructed to educate 827 students in grades seven through nine. The building will encompass six stories and approximately 130,000 square-feet. The project will also include a play area, a service yard and a pedestrian walkway between 36th Street and 37th Street in the City. At the end of the reporting period, a design-build procurement was underway for the project.

The following school profiles provide a closer look at the schools in construction at the end of this reporting period.

MILLVILLE SENIOR HIGH SCHOOL:

- **SCHOOL DISTRICT:** Millville
- **GRADES:** 9th to 12th Grade
- **CAPACITY:** 2,380 Students
- **TOTAL STATE INVESTMENT:** \$137.5 Million



THE CHARLES AND ANNA BOOKER SCHOOL:

- **SCHOOL DISTRICT:** Plainfield
- **GRADES:** Kindergarten to 5th Grade
- **CAPACITY:** 830 Students
- **TOTAL STATE INVESTMENT:** \$59.4 Million



PERTH AMBOY HIGH SCHOOL:

- **SCHOOL DISTRICT:** Perth Amboy
- **GRADES:** 9th to 12th Grade
- **CAPACITY:** 3,300 Students
- **TOTAL STATE INVESTMENT:** \$283.3 Million



PORT MONMOUTH ROAD SCHOOL:

- **SCHOOL DISTRICT:** Keansburg
- **GRADES:** Pre-Kindergarten
- **CAPACITY:** 315 Students
- **TOTAL STATE INVESTMENT:** \$28.4 Million



CLEVELAND STREET ELEMENTARY SCHOOL:

- **SCHOOL DISTRICT:** Orange
- **GRADES:** Pre-K to 8th Grade
- **CAPACITY:** 348 Students
- **TOTAL STATE INVESTMENT:** \$33.2 Million



ORANGE HIGH SCHOOL:

- **SCHOOL DISTRICT:** Orange
- **GRADES:** 9th to 12th Grade
- **CAPACITY:** 1,694 Students
- **TOTAL STATE INVESTMENT:** \$51.9 Million



Capital Portfolio Expansion

Just days after the end of the reporting period, on April 6, 2022, the SDA Board of Directors approved three additional capital projects to become part of the Authority's Capital Program Portfolio. The three new projects to advance are:

- Elizabeth – New Elementary School for approximately 1,000 students
- Garfield – New Replacement PK to 5 School for approximately 700 students
- Bridgeton – An addition to Bridgeton HS for approximately 300 students

Additional information on these projects will be made available in future reports.

Emergent Program

SDA's Emergent Project Program provides the funding for important repair projects at schools throughout the state so that students can learn in facilities that are free from building deficiencies such as leaking roofs and faulty boilers.

Through our Emergent Project Program, the SDA continues to address conditions deemed necessary by the New Jersey Department of Education (DOE) due to potential health and safety concerns. Emergent projects address conditions such as water infiltration issues and include the repair or replacement of roofs, windows, exterior masonry, heating and cooling systems, plumbing, electrical, mechanical and security systems.

SDA is currently managing 17 emergent projects that represent a greater than \$44 million State investment to improve existing buildings in the 31 SDA Districts. At the close of the reporting period, the status of active SDA-managed emergent projects is as follows:

- 5 projects in construction,
- 4 projects in design, and
- 8 projects in scope development.

SDA-Managed Emergent Projects

District	School Name	Project Scope	Status
Burlington	Samuel Smith E.S.	Window Repair/Replacement Partial Roof Replacement	Scope Development
Camden City	Veterans Memorial School	Exterior Masonry, Windows, Roofing & Site Work	Design
East Orange	Fresh Start Academy	Water Infiltration, Roof, Masonry	Scope Development
Irvington	Grove Street School	Boiler Replacement & HVAC Repairs	Design
Newark	Branch Brook E.S.	Water infiltration – Exterior Masonry	Scope Development
Newark	Cleveland E.S.	Boiler Room Vault Repairs	Design
Newark	Ivy Hill E.S.	Boiler Room Vault Repairs	Construction
Newark	Malcolm X. Shabazz H.S.	Structural	Construction
Newark	Roberto Clemente E.S.	Sub-Basement Water Infiltration	Construction
Newark	Salome Urena	Water Infiltration – Exterior masonry	Scope Development
Newark	Technology HS	Structural Vault Repairs/Façade Repairs	Design
Newark	University HS	Partial Roof Replacement	Scope Development
Paterson	PS 5 E.S.	Exterior Masonry & Roofing	Construction
Plainfield	Plainfield H.S.	Building Envelope/ Structural	Construction
Trenton	Franklin E.S.	Exterior Masonry and Boiler Stack Repair	Scope Development
Union City	Emerson M.S.	Roof Replacement and Stucco Repairs	Scope Development
Union City	Union Hill M.S.	Roof Replacement, Stucco Repairs, and Chimney Repairs	Scope Development

SDA is also providing funding for two additional emergent projects delegated for management by local school districts. When delegating projects, SDA executes a grant agreement with a local school district. The district is then responsible for procuring and managing consultants and contractors, with SDA maintaining oversight throughout the process.

District-Managed Emergent Projects			
District	School Name	Project Scope	Status
Newark	Hawthorne School	Exterior Masonry Water Infiltration	Construction
Newark	Malcolm X Shabazz H.S.	Courtyard Drainage Water Infiltration	Construction

SDA also performs site visits at school facilities where potential emergent projects have been requested. The SDA only advances additional emergent projects after an emergent determination by the DOE, and if funding is available to undertake additional projects.

ROD Grants

While the SDA’s funding for projects in the Regular Operating Districts is now nearly exhausted, these projects have had an enormous impact to date in more than 520 school districts throughout the State. Since the inception of the State’s school construction program, the SDA has executed more than 5,400 grants for projects at more than 1,610 school facilities in all 21 of New Jersey’s counties through the Regular Operating District (ROD) Grant program.

With the State investment provided through the SDA, these districts have undertaken projects that include school security upgrades, HVAC repairs, roof replacements, and significant rehabilitation, as well as additions and new schools.

SDA provides grants of at least 40 percent of eligible project costs to local school districts to leverage the local resources that are used to fund these projects. Of the \$3.45 billion in authorized funding for the ROD Grant program, \$3.3 billion has been expended to date and the remaining funding is fully committed for approved projects.

During the reporting period, the SDA disbursed 40 payments totaling over \$2.6 million, which included the close out of 15 projects impacting eight school districts.

SDA's ROD Grant program continues to benefit school districts, as demonstrated by the SDA's active portfolio of 211 grant projects in 53 school districts throughout the State. At the end of the reporting period, these active projects represented more than \$82 million in state share, generating a total investment of more than \$171 million in project costs. With this significant investment, the State continues to support educational needs while contributing to a strong economy.

\$75 Million FY2022 Grant Funding

The New Jersey State FY2022 budget included a direct appropriation of \$75 million to the SDA to provide funding for projects related to emergent and capital maintenance needs. This funding allows both ROD and SDA Districts throughout the state to invest in infrastructure projects that will make New Jersey's school facilities healthier and provide safer environments for students. This is particularly significant in response to the challenges presented by the COVID-19 virus. The SDA's funding can offset a district's costs incurred during FY 2022 associated with addressing those building conditions.

In November 2021, Governor Murphy unveiled the program and announced that all school districts would receive a portion of the \$75 million administered by the SDA. The amount of funds allocated to each district was determined by the DOE. The complete list of all districts and their allocations is available [here](#).

In order for school districts to receive their allocated funding, they must submit to SDA a duly-executed Certification and listing of an eligible emergent and/or capital maintenance project(s). At the end of the reporting period, the SDA had disbursed \$36.3 million to SDA Districts and \$13.4 million to ROD Districts. SDA will continue to disburse grant funding as Districts submit the required Certifications.



"The funds we are announcing today are critical for making sure our schools remain safe and welcoming spaces for our kids and educators and for ensuring that our school buildings can meet the needs of the future."

-Governor Murphy's
Announcement



Flooring Initiative

As previously reported, SDA developed and advanced a multi-step initiative to evaluate flooring materials installed in SDA-delivered school facilities. This was done in consultation with the New Jersey Department of Health (NJDOH), utilizing the important [guidance](#) provided.

As part of this effort, SDA conducted site visits at more than 140 school facilities in SDA Districts. Of these facilities, approximately 30% were determined to have poured polyurethane flooring systems warranting further evaluation. SDA then engaged qualified environmental professionals to perform bulk sample testing and an evaluation of those identified flooring types. Bulk sample testing determined whether air monitoring was appropriate. At the present time, air monitoring activities are ongoing and being performed cognizant of district operational needs. The SDA will work with impacted school districts to address any needed corrective measures identified upon the conclusion of ongoing testing, in accordance with guidance provided by the NJDOH.

During the reporting period, the SDA continued to perform quarterly season indoor air testing in 15 schools. During this fall/winter testing, polyurethane flooring in a particular area in two facilities was deemed appropriate for removal and replacement based on NJDOH guidance – with the work occurring in the summer of 2022.

Following the SDA's experience in this regard, it has been recommended that the NJDOH consider issuing additional guidance to benefit local educational agencies and their consultants when a remediation response action is necessary. This would provide these entities with best practices/preferred approaches for dealing with flooring concerns in their schools.

Metropolitan Statistical Comparison

In an effort to ensure that SDA's construction costs are reasonable when compared to school construction costs in geographic areas with comparable building and economic conditions, the Authority's 2007 enabling legislation requires that twice per year SDA management provide the Legislature a comparison of SDA's capital project costs with projects constructed in the New York City and Philadelphia Metropolitan Statistical Comparison areas (MSA).

The SDA did not advertise any Capital Projects during this reporting period and therefore we do not have any SDA/MSA comparative data to provide at this time. However, significant in this regard is that SDA's cost per square foot for an elementary school project during recent reporting periods ranged from \$300 to \$325 and a high school project was \$369 while, during this reporting period, the cost per square foot for a school in the New York City MSA was \$827 for an elementary school and \$500 for a high school. There was no cost data made available in the middle school category. The Philadelphia MSA reported a cost of \$315 per square foot for an elementary school, and that \$492 is the cost per square foot for a high school.

The data for the New York MSA is inclusive of New York City and its surrounding suburban counties including those located north and east of the City. The data also includes reported costs for facilities in counties in central and northern New Jersey.

Also of note, in the New York City Mayor's Management Report dated September 2021, the New York City School Construction Authority reported a construction bid price for school capacity projects of \$710 per square foot.

School Facilities Projects Approved by DOE

From October 1, 2021 through March 31, 2022, the New Jersey Department of Education issued approvals for 60 school facilities projects in both SDA and the RODs. These included approval of one SDA District project which is being undertaken and funded by the SDA. None of these projects exceeded the Facilities Efficiency Standards (FES).

School Facilities Projects Approved by DOE				
October 1, 2021 – March 31, 2022				
	Total School Facilities Projects Approved	Required Educational Adequacy/FES Review	Projects Requiring Educational Adequacy/RES Review & Exceeding the FES*	% of Projects Requiring Educational Adequacy/FES Review and Exceeding the FES
All Districts	60	18	0	0
SDA Districts	1	1	0	0
RODs	59	17	0	0

Note: The information included in the table above was provided by the New Jersey Department of Education, Office of School Facilities.

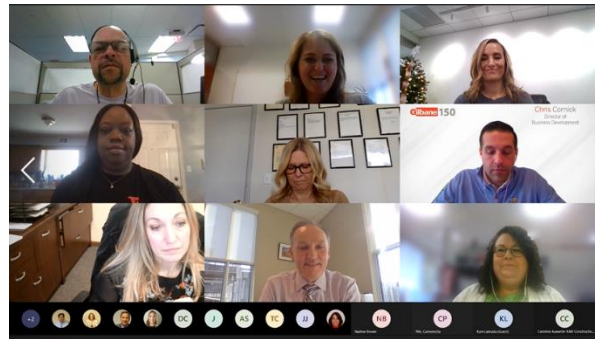
The DOE approved 37 “Other Capital” projects for SDA Districts. These are outside the SDA Managed funding process and not reflected in the table above. The DOE approved 455 “Other Capital” projects for ROD’s. These projects are not reflected in the table above. An “Other Capital” project is a project that is either not eligible for or not seeking State funding support.

BENEFITTING NEW JERSEY BUSINESSES

Training Small Businesses to do Business with SDA

The ongoing pandemic did not prevent the SDA from once again providing its annual Contractor Training Program to benefit small, minority, women, veteran and disabled veteran-owned businesses. This year’s program, offered virtually, provided participants with information to gain valuable knowledge on ways to advance their organizations with specifics on conducting business with the SDA and other state agencies.

The program began in October 2021 and culminated in a graduation ceremony in December, recognizing the 19 firms that successfully completed the program. At the virtual graduation ceremony, the participating firms had the opportunity to hear from representatives of a couple of larger construction firms that have successfully completed SDA Capital projects in the past.



At the graduation ceremony, CEO Manuel Da Silva said, “We’re optimistic that this training program will forge new partnerships between us and you. We hope that this training has helped arm you with some of the tools you will need, to go out and form partnerships of your own, in order to work on not only SDA projects but other public works projects across the State of New Jersey.”

The firms participated in eight weeks of classes taught largely by SDA employees who are subject-matter experts in addition to several outside professionals from the New Jersey Department of Labor, New Jersey Economic Development Authority, and the New Jersey Department of the Treasury.

To date, more than 220 firms have successfully completed the SDA’s Contractor Training Program.



“This training has surpassed all of my expectations. There were useful tools, resources and so many insights that were shared. I’m so glad that I went to this program.”

-American Safety, 2021 Contractor Training Program Graduate



This year’s graduating firms represented industries including residential and commercial cleaning, glazing, masonry construction, general construction, plumbing, electronic security, and janitorial services.

SDA intends to continue annual offerings of this training program.

SDA Projects Create Jobs for New Jersey’s Construction Industry

School construction projects are an economic driver for the State’s construction industry and a means to ensure its vitality. The continued advancement of SDA projects throughout the pandemic was a lifeline for many construction companies. For the capital projects in construction at the end of the reporting period, the \$594 million investment in school facilities represents the creation of more than 5,100 job-years. In addition, the 265 active ROD Grants throughout the State with total project costs of more than \$171 million represents an additional 1,400 job-years created by investing in New Jersey’s schools.

Small Business Goals

The SDA’s is committed to ensuring that at least 25% of the total dollar value of all publicly advertised contracts it awards during a fiscal year goes to small business enterprises. The SDA requires consultants and prime contractors to make good-faith efforts to identify and hire available small business enterprise sub-consultants and sub-contractors and to award at least 25% of the total contract value to them.

Specific activity during this reporting period includes SDA-awarded contracts totaling \$6,778,715, with 24.09 percent of the total dollar value awarded *so far* to Small Business

Enterprises (inclusive of minorities and women). This included awards for six emergent projects.

The SDA also compiles information on the number of school construction contracts awarded by the Authority to women, minority, veteran and veteran-owned contractors. This information includes the total value of these contracts and the percentage that they represent of all SDA school facilities projects that have entered into construction during the reporting period. This reporting period, women-owned businesses received \$80,000 or 1.18 percent of total SDA construction contracts awarded. Minority-owned businesses received \$189,925 or 2.80% of total SDA-contracts. There were no awards to veteran or disabled-veteran-owned businesses during the reporting period.

Minority/Female Workforce Hours

Through payroll certification, the SDA tracks the number of work hours by trade, broken down by minority and female workers. The chart below demonstrates the number of work hours on active construction sites and the percentage breakdown by women and minorities.

Number of Minority/Female Work-Hours by Trade					
(October 1, 2021-March 31, 2022)					
Trade	Total Work-Hours	Minority Work-Hours	Minority Work-Hours Percentage	Female Work-Hours	Female Work-Hours Percentage
Asbestos Removal/Treatment	666	112	16.82%	104	15.62%
Bricklayer/Mason	40,350	13,099	32.46%	0	0
Carpenter	29,424	5,861	19.92%	501	1.7%
Caulking & Waterproofing	759	584	76.94%	0	0
Communications Systems	602	0	0	0	0
Concrete/Cement Finisher	428	9	2.1%	0	0
Crane Operator	584	48	8.22%	0	0
Dock builder	456	0	0%	0	0
Dry Wall - All	32	32	100%	0	0
Electrician	24,389	4,181	17.14%	526	2.16%
Elevator Constructor	208	0	0	0	0
Fireproofing Applications	248	16	6.45%	0	0
Flooring/Tile Installation	292	43	14.73%	0	0

Glazier	1,521	88	5.79%	0	0
HVACR	6,151	674	10.96%	88	1.43%
Insulation - All	601	487	81.03%	0	0
Iron Worker	42,019	5,874	13.98%	40	0.1%
Laborer	44,296	28,100	63.44%	0	0
On-site Supervision	1,754	0	0	0	0
Operating Engineer	16,662	524	3.14%	0	0
Painter	2,383	718	30.13%	8	0.34%
Pipefitter	1,478	40	2.71%	0	0
Plumber	18,296	3,347	18.29%	0	0
Roofer	5,554	2,307	20.78%	0	0
Sheet Metal Worker	7,417	1,020	13.75%	0	0
Site Work	587	215	36.63%	0	0
Sprinkler Fitter	633	56	8.85%	0	0
Truck Driver	14	0	0	0	0
TOTALS	247,804	67,435	27.21%	1,267	0.51%

SDA FINANCES

In 2000 and 2008, the New Jersey State Legislature authorized a total of \$12.5 billion in funding for SDA projects (\$8.9 billion for SDA Districts, \$3.45 billion for RODs and \$150 million for vocational schools). Bonds are issued by the New Jersey Economic Development Authority (EDA) to support the work of the SDA. The capital raised from the sale of bonds represents the Administration's recognition of facilities needs throughout the state of New Jersey. Since the program's inception through the end of the reporting period, the amount of bonds issued to fund the program is approximately \$11.85 billion. There were no bond issuances during the reporting period.

As of March 31, 2022, SDA had approximately \$504 million in cash on hand, having disbursed nearly \$181 million during the reporting period. The Authority's 2021 annual financial statements, audited by Ernst & Young LLP, can be found on the SDA's website at: <https://www.njsda.gov/Public/AnnualAndOtherReports>.

SDA continues to work diligently to recover funds for the program through multiple avenues. During the reporting period, the SDA resolved \$800,000 in contractor claims for a total settlement amount of \$219,600. These settlements equal 27.45% of the original amounts claimed to be owed by the SDA.

The SDA also completed the transfer of a strip of surplus property on Main Avenue in the City of Passaic adjacent to the SDA-constructed Sonia Sotomayor Elementary School project (the "buffer strip"). The transfer was consummated in November 2021 – with the buffer strip ultimately passing to a redeveloper and the SDA receiving sale proceeds of \$850,000. The buffer strip will now be developed for mixed commercial and residential uses. This transaction benefits the District, the City and the SDA. For the District, the buffer strip will serve to shield the school and its students from Main Street noise and traffic. The City stands to benefit from the new mixed use construction and associated rateables. The SDA can now apply the proceeds from the sale of this surplus property to the advancement of additional school facilities needs.

FY 2023 Budget Appropriation

The Governor’s FY 2023 Budget proposal includes a direct appropriation of \$350 million to the SDA to support school facilities projects in SDA school districts. If approved, this direct appropriation of \$350 million will allow the SDA to support the advancement of new SDA District projects to address needs identified in the 2022 Strategic Plan Update. Once again, the FY 2023 Appropriations Act also includes \$75 million in appropriations for projects related to emergent and capital maintenance needs. If approved, the \$75 million will be made available to both SDA Districts and Regular Operating Districts.