



BIANNUAL **REPORT**

FOR THE REPORTING PERIOD OF
April 1, 2022 to September 30, 2022

New Jersey Schools Development Authority (SDA)

The New Jersey Schools Development Authority (SDA or the Authority) fully funds and manages the new construction, modernization and renovation of school facilities projects in 31 school districts known as SDA Districts. The Authority also makes grants available to Regular Operating Districts (RODs) throughout New Jersey for facilities projects approved by the New Jersey Department of Education (DOE).

SDA MISSION

Our mission is to deliver high-quality educational facilities that best meet the needs of the students of the State of New Jersey. While providing efficiently designed facilities that enhance the academic environment, we promote fiscal responsibility in the management of taxpayers' resources.

SDA EXECUTIVE STAFF

Manuel M. Da Silva

Chief Executive Officer

Donald R. Guarriello

Vice President and Chief Financial Officer

Jane F. Kelly

Vice President – Corporate Governance and Legal Affairs

SDA BOARD MEMBERS

Public Members



Robert Nixon, Chairman
*Director of Government Affairs,
NJ State Policemen's Benevolent Assn.*



Daniel Gumble
*Business Representative, I.B.E.W. Local
164*



Richard Elbert, AIA
*General Counsel, Americas
Bjarke Ingels Group*



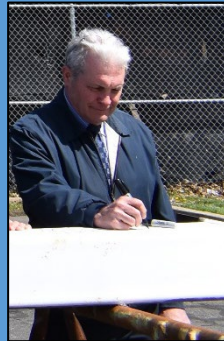
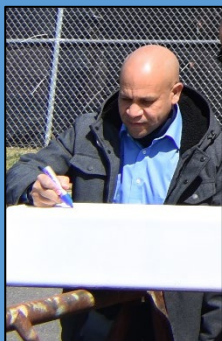
Lester Lewis-Powder
President, Let's Celebrate, Inc.



Michael Maloney
*Business Manager/ Financial Secretary,
Plumbers & Pipefitters Local Union No. 9
President, Mercer County Central Labor
Council*



Mario Vargas
*Broker/Owner, Senior Health Navigators,
LLC*



Ex-Officio Members



Angelica Allen-McMillan, Ed. D.
*Acting Commissioner, New Jersey
Department of Education*



Tim Sullivan
*Chief Executive Officer, New Jersey
Economic Development Authority*



Lt. Governor Sheila Oliver
*Commissioner, New Jersey Department of
Community Affairs*



Elizabeth Maher Muoio
*State Treasurer, New Jersey Department of
the Treasury*



Table of Contents

SDA EXECUTIVE STAFF.....	2
SDA BOARD MEMBERS.....	3
MESSAGE FROM THE BOARD CHAIRMAN AND THE CEO.....	5
NEW FUNDING FOR STATE’S SCHOOL CONSTRUCTION PROGRAM.....	7
A NEW CAPITAL PROGRAM.....	8
IMPROVING NEW JERSEY’S EDUCATIONAL FACILITIES	10
Celebrating the Opening of SDA’s Largest Project to Date.....	10
New Spaces Available to Students This Fall	12
Active School Construction Across the State.....	13
<i>Demolition Paves Way for New Middle School in Union City.....</i>	14
<i>Largest SDA Project Celebrates Major Milestone.....</i>	14
<i>Plainfield School Named for Civil Rights Activists Continues</i>	16
Emergent Program	17
ROD Grant Program.....	19
<i>New ROD Grant Funding.....</i>	20
\$75 Million Emergent and Capital Maintenance Grant Funding.....	20
Flooring Initiative	21
Metropolitan Statistical Comparison	22
School Facilities Projects Approved by DOE.....	23
BENEFITING NEW JERSEY’S CONSTRUCTION INDUSTRY	24
Supporting Construction Jobs.....	24
SDA Construction Supports Small Businesses and a Diverse Workforce.....	24
Minority/Female Workforce Hours	25
SDA FINANCES	27

MESSAGE FROM THE BOARD CHAIRMAN AND THE CEO



Robert Nixon, Board Chairman

The New Jersey Schools Development Authority (SDA) is pleased to present our Biannual Report for the period of April 1, 2022 through September 30, 2022. This report is submitted pursuant to the provisions of P.L. 2007, c. 137 and summarizes the progress and accomplishments of New Jersey’s school construction program during the six-month reporting period.

The information included herein will detail the impact of SDA’s Program during the reporting period on students, communities, and stakeholders throughout the State. We continue to have a great story to tell.



Manuel Da Silva, SDA CEO

It is important to begin by recognizing the Murphy Administration’s commitment to and investment in improving New Jersey’s educational infrastructure as demonstrated by the appropriation of \$2 Billion in the Fiscal Year 2023 Budget to address facility needs in SDA and RODs statewide. Thanks to the Governor and the State

Legislature, the new funding allocated to the State’s school construction program has allowed us to move ahead with projects identified in our 2022 Strategic Plan update.

As a result of this funding, the SDA Board of Directors approved an additional 19 Capital projects for advancement. This includes 16 projects that will address overcrowding and 3 that will address facilities conditions deficiencies. In the coming year the SDA is positioned to provide grants for projects in RODs and projects to address capital maintenance and emergent needs in Districts throughout the State.

As these new projects advance, SDA continues to deliver on its commitments through the completion of school construction projects. This fall the SDA opened four new schools as part of its largest project completed to date – a 448,000 square foot educational campus in Passaic. These schools will have a positive impact on this community – providing a neighborhood school on the northeast side of Passaic and enabling the district to offer

3,000 students exceptional educational spaces and resources. In addition, the SDA opened new spaces on multi-phase projects in Keansburg, Orange, and Millville.

The SDA was committed to expeditiously administering the FY 2022 \$75 Million Grant program, enabling ROD and SDA Districts to make important and necessary repairs and improvements to their school facilities. We succeeded in this endeavor, disbursing nearly all of the available funds by the end of the reporting period.

The SDA exemplifies the Administration's commitment to building a top-ranked, equitable education system for all New Jersey students. Through its Capital, Capital Maintenance, Emergent Project and ROD Grant Programs, the SDA has played a significant role in assisting the State in its efforts to achieve this goal. Throughout the reporting period, the SDA maintained an extensive portfolio of work focused on these and other initiatives.

The SDA is staffed with talented professionals committed to our mission of building quality schools for children across New Jersey. Our Authority continues to be supported by an exceptional Board of Directors. The staff of the SDA, its executive leadership and its Board of Directors will continue to advance its important work in a manner that utilizes best practices, ensures transparency and accountability, and provides long-lasting state-of-the-art facilities for New Jersey's children.

One of our greatest responsibilities is to ensure that New Jersey's students have the learning environments that they need in order to learn and thrive. We take that responsibility very seriously and recognize that more remains to be done. We look forward to continuing this important work alongside our legislative, executive branch, local, school district, and community partners.

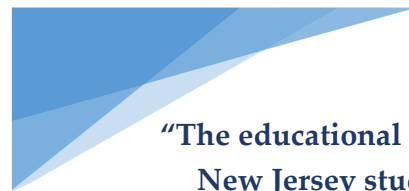
NEW FUNDING FOR STATE'S SCHOOL CONSTRUCTION PROGRAM

This reporting period was marked by a substantial investment that supports the development and commencement of construction of capital projects in SDA Districts over the next several years, provide grants to many of the State's RODs, and provide emergent funding to address critical facility needs.

The DOE's 2019 Educational Facilities Needs Assessment and Prioritization of School Facilities Projects for SDA Districts (2019 EFNA) identified a shortage of more than 17,000 student seats in the 31 SDA Districts. It also identified deficiencies at existing facilities due largely to aging infrastructure. The information contained within the 2019 EFNA provided the foundation for development of SDA's 2019 Strategic Plan and subsequent Capital Plans. Following a \$200 million appropriation in Fiscal Year 2022, SDA was able to advance 3 Capital projects that would provide approximately 2,000 new seats.

In June 2022, the Governor signed the Fiscal Year 2023 Budget and Appropriations Act and S2944, dedicating additional funding for school construction in both the Regular Operating and SDA Districts. This funding will significantly address the capacity deficiencies identified and remedy facility conditions as well.

This most recent appropriation of funds provides \$1.55 billion to pay for capital school construction projects in the state's 31 SDA districts as well as \$350 million for grant projects in RODs through the Debt and Defeasance Fund. The Budget and Appropriations Act included \$75 million to be allocated to every school district (SDA and ROD) for capital maintenance and emergent projects.



“The educational success of all New Jersey students is a top priority for my Administration. The necessary investments to SDA and DOE will see that our schools possess the proper infrastructure for our students to thrive in their educational environments. These children are our state’s future leaders, and every child deserves a world-class education and school in which to learn and to grow.”

Governor Phil Murphy

A NEW CAPITAL PROGRAM

Among its most significant accomplishments this reporting period, was SDA’s approval of the 2022 Capital Plan that authorized an additional 19 projects for advancement. In April 2022, the SDA Board of Directors advanced 3 capital projects following a \$200 million direct appropriation provided in the Fiscal Year 2022 Budget. Then, in September 2022, the SDA Board of Directors authorized advancement of 16 additional capital projects following the \$1.55 Billion direct appropriation provided through the Debt and Defeasance Fund.

The Murphy Administration’s commitment to and investment in improving New Jersey’s educational infrastructure has allowed the SDA Board of Directors to advance projects in SDA districts that will address critical needs. These projects are detailed below.

Projects to Address Overcrowding:

County	District	Grades Served	Project Type
Cumberland	Bridgeton	PK, 6 - 8	Addition/Renovation
Cumberland	Bridgeton	6 - 8	Addition/Renovation
Cumberland	Bridgeton	9-12	Addition/Renovation
Union	Elizabeth	PK-8	New School (Replacement)
Bergen	Garfield	PK - 5	New School (Replacement)
Bergen	Garfield	PK-5	New School (Replacement)
Hudson	Jersey City	PK	New School
Middlesex	New Brunswick	6 - 8	Addition/Renovation
Essex	Newark	PK - 8	New School (Replacement)
Essex	Newark	PK - 8	New School (Replacement)
Passaic	Passaic City	9 - 12	TBD
Passaic	Paterson	9 - 12	New School or Addition/Renovation
Middlesex	Perth Amboy	K - 5	New School
Atlantic	Pleasantville	PK - 5	New School (Replacement)
Mercer	Trenton	K - 5	New School
Hudson	West New York	PK - 8	New School

Projects to Address Serious Facilities Deficiencies through Replacement Facilities:

County	District	Grades Served	Project Type
Camden	Camden City	PK – 8	New School (Replacement)
Camden	Camden City	PK – 8	New School (Replacement)
Salem	Salem City	PK – 8	New School (Replacement)

The projects approved were selected for advancement using the same methodology and factors established in 2011-- emphasizing high educational need due to overcapacity, facilities needs and efficient construction factors. The SDA and DOE met with the 31 SDA Districts in working group meetings to identify and validate their highest priority needs. In addition, the SDA and DOE evaluated more recent enrollment data with the DOE 2019 Educational Facilities Needs Assessment (EFNA) to ensure that the most relevant up-to-date information was being utilized.

For more information on the 2022 Statewide Strategic Plan Update and Capital Plan, please visit:

https://www.njsda.gov/Content/Projects/2022_Statewide_Strategic_Plan.pdf.

IMPROVING NEW JERSEY'S EDUCATIONAL FACILITIES

Celebrating the Opening of SDA's Largest Project to Date



This fall was marked by the opening of the new Passaic Dayton Avenue Educational Campus – which encompasses four schools. Governor Murphy was on hand to cut the ribbon on the new facility days before the building opened to thousands of Passaic students. This project represents the largest facility completed by the SDA since its inception.

The \$241 million campus includes four new schools in one 448,000 square-foot unified structure. This state-of-the-art facility will provide educational spaces and resources for up to 3,000 students in Grades Pre-Kindergarten through 8. The schools include the following:

- Abraham Lincoln School (Pre-K program) - 28 classrooms, three specialized rooms, and a courtyard play area.

- Mahatma Gandhi Elementary School - 33 general classrooms, five self-contained special education classrooms, three science labs, media center, music room, and gym.
- Ellen Ochoa Gifted and Talented Academy (Magnet School program) - 28 general classrooms, three self-contained special educational classrooms, three science labs, art room, dance studio, vocal music room, media center, two Teach to One Learning Areas, and cafeteria.
- Muhammad Ali Middle School - 27 general classrooms, six self-contained special education classrooms, three science labs, four project labs, three Teach to One Learning Areas, gym, cafeteria as well as classrooms dedicated to the arts.

“We cannot succeed as a State unless we succeed in ensuring every student can learn, grow, and indeed succeed. Today we cut the ribbon on a campus for the children of Passaic who will have these very opportunities.”

Governor Phil Murphy

The Governor not only celebrated the opening of this much-needed facility but also highlighted the significant investments in education included in the Fiscal Year 2023 budget. At the event, SDA CEO Manuel Da Silva noted “this funding supports the delivery of schools in Passaic and communities throughout the State to address significant capacity and facility deficiencies.”



Although these four schools opened to students in September, the Passaic school district utilized some of the facility space as early as January 2022 as part of a soft opening. Some of the school district’s youngest learners had the opportunity to enjoy the educational spaces available in the Abraham Lincoln School during this time. This was possible due to the early delivery of this project, months

ahead of schedule. SDA CEO Da Silva witnessed the impact of the new facility on these pre-kindergarten students during a visit to celebrate “Read Across America” Day when

students demonstrated their use of the innovative spaces and the interactive display board.

New SDA schools are delivered with 1:1 technology including a combination of tablets, Chromebooks, desktops and laptops as deemed appropriate within each school district's educational program. This, along with classroom interactive display boards, provides students and educators with the technology they need to teach and learn through a variety of settings and approaches.

SDA's new school facilities also incorporate the guidelines developed by the United States Green Building Council (USGBC) known as the "Leadership in Energy & Environmental Design ("LEED") program in order to maximize energy efficiency and environmental sustainability in school design. The newly-delivered Passaic schools are all on track to achieve LEED certification.

Finally, the four new schools in Passaic were delivered with a design-build approach. The design-build method differs from the traditional design-bid-build approach by allowing the SDA to contract with one firm for both design and construction of a school facilities project. The design-build method allows for some design and construction activities to proceed concurrently through phased advancement.

New Spaces Available to Students This Fall

The **Port Monmouth Road School project in Keansburg** enjoyed a partial opening in September 2022 as the SDA completed the construction of a new, single-story addition of approximately 27,500 square-feet. The new addition includes 13 Pre-kindergarten classrooms, a food service area, nurse's area, and support facilities.

At the end of the reporting period, work continued on 19,000 square-feet of renovations to the existing facility which includes eight Pre-Kindergarten classrooms and a Gross Motor Skills Area. Two new playgrounds also will be provided for student use. Upon completion of the renovation work, this school will be equipped to serve 315 Pre-kindergarten students.

The SDA also delivered renovated spaces this fall as part of multi-phased projects in both Orange and Millville.



In Orange, the SDA completed renovations to the original **Orange High School** that included a new first and second floor cafeteria, a connector bridge between the Orange High School and Orange Preparatory Academy, and science labs in the existing building. The SDA continues work at the Orange Preparatory Academy for the replacement of HVAC units in the locker rooms and renovations of two classrooms. Last year, the SDA opened a 50,000 square-foot addition to the school that increased student capacity by more than 570 student seats.

The final phase of the **Millville Senior High School** multi-year, multi-phase project is nearly complete. Spaces that opened to students this fall included renovated classrooms in the B and C wings as well as a renovated music room. The SDA continues work on the construction of a new 26,000 square-foot auditorium at the Millville Senior High School. This portion of the project continues due to ongoing supply chain issues as well as SDA's agreement to provide additional scope of work requested by the Millville School District. This work is anticipated for completion in 1st Quarter of 2023.

Active School Construction Across the State

At the end of the reporting period, six projects from SDA's Capital Plan portfolio remained in active construction, representing a State investment of more than \$659 Million. This includes the start of a new school in Union City; the completion of multi-phased projects in Keansburg, Millville and Orange; and new construction in Plainfield and Perth Amboy. In addition to the projects in construction highlighted above, one project remains in scope development.

Demolition Paves Way for New Middle School in Union City

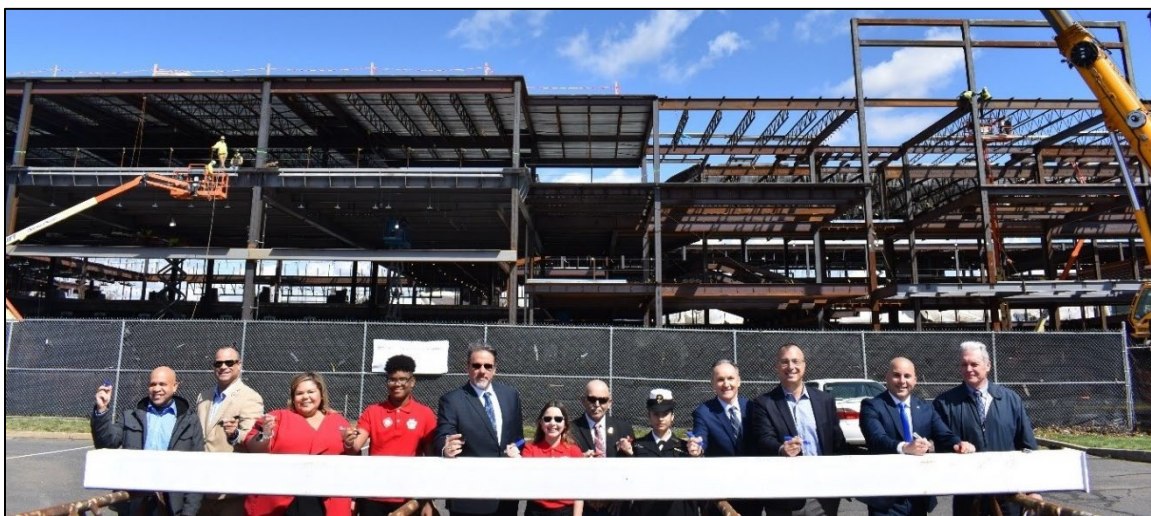
This reporting period, early Site work began on the new Grade 7-9 School in Union City, to ready the site for future construction of a new educational facility. This included the demolition of three houses and a two-car garage, removal of underground oil storage tanks, and backfilling of the site with clean soils.



The new \$93.7 million school will be an approximately 132,000 square-foot, six-story facility designed to educate more than 800 students in grades 7 to 9. In addition to general classrooms, some of the specialized spaces in the school will include a hydroponics lab and robotics lab, along with a technology lab, dance studio, and rooftop greenhouse.

The SDA awarded a design-build contract in July 2022 to Dobco, Inc. for the design and construction of this facility to help alleviate capacity deficits in the Union City School District. The design phase of the design-build engagement, led by NK Architects, P.A., has commenced and the project is anticipated to begin construction in the first quarter of 2023.

Largest SDA Project Celebrates Major Milestone



The largest project ever undertaken by the SDA marked a major milestone during this reporting period with a beam signing ceremony for the new **Perth Amboy High School**. To celebrate this significant construction progress, SDA joined school district officials, legislators, stakeholders and students as attendees penned their name to a piece of steel that will become a lasting part of this new facility.



The beam signing at the new Perth Amboy High School represents the state’s continued dedication to the Perth Amboy student community. Our students will benefit from the 21st century education provided by this state-of-the-art facility for generations to come. We are proud to continue supporting this project and look forward to the high school’s completion.”

*Statement from Senator Joseph F. Vitale,
Speaker Craig J. Coughlin, and
Assemblywoman Yvonne Lopez*

The construction of this highly anticipated \$283.8 million School will provide a 576,000-square-foot, three story facility for a maximum of 3,300 students in Grades 9 through 12. The new school will occupy 11.63 acres, on the former site of the Delaney Homes Public Housing development.

In addition to general classrooms and science labs, the school will include specialized educational spaces such as an automotive lab, a culinary arts lab, a black box studio, dance studio, Reserve Officers’ Training Corps (ROTC) classroom, world languages classroom, life skills lab, and a daycare center.

With the steel structure completed, work to enclose the building - exterior walls, masonry, roofing, and window installation - proceeded throughout the reporting period.

Plainfield School Named for Civil Rights Activists Continues

The new **Charles and Anna Booker School in Plainfield**, named by the Plainfield Board of Education in honor of longtime civil rights activists Charles and Anna Booker, made significant progress during the reporting period. At the end of September, the SDA was completing building enclosure, work on interior finishes and mechanical systems, and exterior site work.



The new, three-story facility of approximately 120,000 square-feet is designed to educate a maximum of approximately 840 students in grades Kindergarten to 5th. The school will include 41 classrooms, an art room, a vocal/music room, an instrumental lesson room, a technology lab, a science demo room, a computer lab, a gymnasium, a cafeteria, a media center, a playground, and a basketball court.

SDA Projects in Construction as of September 30, 2022				
District	Project Name	Project Type	Total Estimated Project Cost	Max Student Capacity
City of Orange	Orange High School	Addition/Renovation	\$56.1M	1,700
Keansburg	Port Monmouth Road	Addition/Renovation	\$28.4 M	318
Millville	Millville Senior H.S.	South Addition/Renovation	\$137.5 M (overall project costs)	2,384
Perth Amboy	High School	New School	\$283.8 M	3,295
Plainfield	Charles and Anna Booker School	New School	\$59.4 M	840
Union City	Grade 7 to 9 School	New School	\$93.7M	840
6 Schools in construction			\$658.9M	9,377

Emergent Program

SDA’s Emergent Project Program provides the funding for important repair work at schools throughout the state so that students can learn in facilities that are free from building deficiencies such as leaking roofs and faulty boilers.

Through our Emergent Project Program, the SDA continues to address conditions deemed necessary by the DOE due to potential health and safety concerns. Emergent projects address conditions such as water infiltration and include the repair or replacement of roofs, windows, exterior masonry, heating and cooling systems, plumbing, electrical, mechanical and security systems.

During the reporting period, the SDA completed two emergent projects that made necessary structural repairs to the Boiler rooms of Ivy Hill Elementary School in Newark and the Plainfield High School respectively. These two projects represented more than \$2 million in emergent repairs.



At the end of the reporting period, SDA was managing 15 emergent projects, representing more than \$47 million in State investments, to improve existing buildings in the 31 SDA Districts. At the close of the reporting period, the status of active SDA-managed emergent projects is as follows:

- 3 projects in construction,
- 4 projects in design, and
- 8 projects in scope development.

SDA-Managed Emergent Projects			
District	School Name	Project Scope	Status
Burlington	Samuel Smith E.S.	Window Repair/Replacement Partial Roof Replacement	Scope Development
Camden City	Veterans Memorial School	Exterior Masonry, Windows, Roofing & Site Work	Design

District	School Name	Project Scope	Status
East Orange	Fresh Start Academy	Water Infiltration, Roof, Masonry	Scope Development
Irvington	Grove Street School	Boiler Replacement & HVAC Repairs	Design
Newark	Branch Brook E.S.	Water infiltration – Exterior Masonry	Scope Development
Newark	Cleveland E.S.	Boiler Room Vault Repairs	Design
Newark	Malcolm X. Shabazz H.S.	Structural	Construction
Newark	Roberto Clemente E.S.	Sub-Basement Water Infiltration	Construction
Newark	Salome Urena	Water Infiltration – Exterior masonry	Scope Development
Newark	Technology HS	Structural Vault Repairs/Façade Repairs	Design
Newark	University HS	Partial Roof Replacement	Scope Development
Paterson	PS 5 E.S.	Exterior Masonry & Roofing	Construction
Trenton	Franklin E.S.	Exterior Masonry and Boiler Stack Repair	Scope Development
Union City	Emerson M.S.	Roof Replacement and Stucco Repairs	Scope Development
Union City	Union Hill M.S.	Roof Replacement, Stucco Repairs, and Chimney Repairs	Scope Development

SDA is also providing funding for two additional emergent projects delegated for management by local school districts. When delegating projects, SDA executes a grant agreement with a local school district. The district is then responsible for procuring and managing consultants and contractors, with SDA maintaining oversight throughout the process.

District-Managed Emergent Projects			
District	School Name	Project Scope	Status
Newark	Hawthorne School	Exterior Masonry Water Infiltration	Construction
Newark	Malcolm X Shabazz H.S.	Courtyard Drainage Water Infiltration	Construction

SDA performs site visits to school facilities where funding for potential emergent projects has been requested. The SDA advances additional emergent projects after an emergent determination has been made by the DOE, and when funding is available to undertake them.

ROD Grant Program

The SDA's funding of projects in the RODs has had an enormous impact in more than 520 school districts throughout the State. Since the inception of the State's school construction program, the SDA's ROD Grant program has funded more than 5,400 grants for projects at more than 1,610 school facilities in all 21 of New Jersey's counties.

With a State investment provided through the SDA, these districts have undertaken projects that include school security upgrades, HVAC repairs, roof replacements, and facility rehabilitations, as well as additions and new schools.

SDA provides grants of at least 40 percent of eligible project costs (although some districts may be eligible for a higher share) to local school districts to leverage the local resources that are used to fund these projects. For a school facilities project to be considered for grant funding, the proposed scope of work must be 100 percent eligible for State support. Including Vocational Schools, of the more than \$4.0 billion in funding authorized for the ROD Grant program, \$3.4 billion has been expended to date.

During the reporting period, the SDA disbursed 39 payments totaling over \$4.5 million, which included the close out of 12 projects impacting six school districts.

SDA's ROD Grant program continues to benefit school districts, as demonstrated by the SDA's active portfolio of 199 grant projects in 51 school districts throughout the State. At the end of the reporting period, these active projects represented more than \$74 million in state share, generating a total investment of more than \$154 million in project costs. With this significant investment, the State continues to support educational needs while contributing to a strong economy.

New ROD Grant Funding

On June 30, 2022, Governor Murphy signed P.L.2022, c.18 which includes a direct appropriation of \$350 million to the SDA to provide funding for additional grant projects in the RODs. Only projects that are 100 percent eligible for State support and do not require a local referendum to raise the local funding portion will be eligible to receive grant funding.

Funds may be used to address school facilities projects that address critical operational building needs, including health and safety issues, essential upgrades or repairs, and other related projects. These projects could include the repair or replacement of structural, mechanical/heating and cooling, electrical, and plumbing systems; roof repairs or replacements; window and masonry repairs; building code projects; ADA upgrades; hazardous material abatement; security and communication system upgrades; technology infrastructure upgrades; playground upgrades; renovated or new early childhood classrooms; projects to address special needs program expansion or educational adequacy; existing site upgrades; renovation and/or new construction of capacity-generating classrooms to address overcrowding or substandard conditions.

Following an application cycle managed by the DOE, the SDA anticipates making grant offers to school districts in 2023.

\$75 Million Emergent and Capital Maintenance Grant Funding

The New Jersey State FY 2023 budget once again included a direct appropriation of \$75 million to the SDA to provide funding for projects related to emergent and capital maintenance needs. As in Fiscal Year 2022, this funding allows both ROD and SDA Districts throughout the state to invest in infrastructure projects that will make New Jersey's school facilities healthier and provide safer environments for students.

Many of the projects funded by this grant program addressed HVAC, building envelope, site, plumbing, security, and mechanical work in New Jersey's public schools. SDA's efforts reflect the Murphy Administration's commitment to ensuring a high-quality education for every student in New Jersey and directly impacted student learning by

providing the funding to assist Districts with making improvements to their school facilities. The SDA's funding can offset costs incurred by a district while addressing those building conditions.

In order for school districts to receive their allocated funding, they were required to provide SDA with a duly-executed certification that lists an eligible emergent and/or capital maintenance project(s). Of the Fiscal Year 2022 allocation, the SDA disbursed \$50 million to SDA Districts and \$20.4 million to RODs at the end of the reporting period. Any Fiscal Year 2022 funding not yet requested by the Districts will be made available to augment Fiscal Year 2023 allocation amounts.

Flooring Initiative

As previously reported, SDA developed and advanced a multi-step initiative to evaluate flooring materials installed in SDA-delivered school facilities. This was done in consultation with the New Jersey Department of Health (NJDOH), utilizing the important [guidance](#) they provided.

SDA conducted site visits to more than 140 school facilities and performed testing, when deemed necessary in accordance with NJDOH guidance. During the reporting period, following continued annual testing of several facilities, SDA successfully completed the removal and replacement of flooring at two facilities where corrective measures were deemed necessary. The work addressed polyurethane flooring at the Thurgood Marshall Primary School in Asbury Park and the Green Grove Elementary School in Neptune.

The SDA has continued to work with impacted school districts to implement any needed corrective measures identified upon the conclusion of ongoing testing in accordance with NJDOH guidance. SDA anticipates this multi-step initiative will be completed in 2023 as seasonal air testing culminates for those school facilities where ongoing testing is underway.

Metropolitan Statistical Comparison

The Authority’s 2007 enabling legislation required that management provide the Legislature a twice per year comparison of SDA’s capital project costs with projects constructed in the New York City and Philadelphia Metropolitan Statistical Comparison areas (MSA). The SDA advertised the Union City Middle School project during this reporting period. The associated comparison can be found in the chart below.

The data for the New York MSA is inclusive of New York City and its surrounding suburban counties including those north and east of New York City as well as counties in central and northern NJ.

Metropolitan Statistical Area (MSA) Totals				
Cost Per Square Foot Comparison at Bid				
Statistical Brief				
Source	Area	Elementary School	Middle School	High School
Dodge Data & Analytics <i>(Formerly McGraw-Hill)</i> Metropolitan Statistical Area (MSA) (Reports Dated Apr. 2022 - Sep. 2022)	Philadelphia	\$496	-	\$346
	New York	\$633	\$300	\$758
New York City School Construction Authority^ (Dated Sep. 2022 for Fiscal 2022)	New York City	\$905		
SDA Managed Projects* (April 2022 - September 2022)	Statewide	-	\$483	-

The table represents a statistical cross-section of data from numerous sources with report dates ranging from April 2022 - September 2022. Costs are at time of bid.

1 - No Current reporting for Region 2 (for NJ, NY and PA only) as reported by School Planning & Management.

^Numbers reflect the New York City Mayor’s Management Report Dated September 2022. Construction bid price for school capacity projects per square foot.

**Cost at Bid for 1 SDA District Project (Union City - New Middle School (Grade 7-9)). Construction costs do not include costs for site construction. (For projects advanced via Design-Build Engagements, design fees included in the bid amount have been deducted to calculate the Construction Cost Per Square Foot).*

School Facilities Projects Approved by DOE

From April 1, 2022 through September 30, 2022, the New Jersey DOE issued approvals for 126 school facilities projects in the RODs. None of these projects exceeded the Facilities Efficiency Standards (FES)¹.

School Facilities Projects Approved by DOE				
April 1, 2022 – September 30, 2022				
	Total School Facilities Projects Approved	Required Educational Adequacy/ FES Review	Projects Requiring Educational Adequacy/RES Review & Exceeding the FES*	% of Projects Requiring Educational Adequacy/FES Review and Exceeding the FES
All Districts	126	40	0	0%
SDA Districts	0	0	0	0%
RODs	126	40	0	0%

Note: The information included in the table above was provided by the New Jersey DOE Office of School Facilities.

The DOE approved 94 “Other Capital” projects for SDA Districts. These are outside the SDA Managed funding process and not reflected in the table above. The DOE approved 351 “Other Capital” projects for ROD’s. These projects are not reflected in the table above. An “Other Capital” project is a project that is either not eligible or not seeking State funding support.

¹ “Facilities efficiency standards” means the standards developed by the Commissioner of Education pursuant to subsection h. of section 4 of the Educational Facilities and Construction Financing Act. The facilities efficiency standards developed by the commissioner shall not be construction design standards but rather shall represent the instructional spaces, specialized instructional areas, and administrative spaces that are determined by the commissioner to be educationally adequate to support the achievement of the core curriculum content standards including the provision of required programs in Abbott districts and early childhood education programs in the districts in which these programs are required by the State.

BENEFITING NEW JERSEY'S CONSTRUCTION INDUSTRY

Supporting Construction Jobs

New Jersey's school construction program plays an integral role in the State's efforts to modernize New Jersey schools. At the same time as this investment provides opportunities for our State's children by maximizing the long-term viability of our educational infrastructure, it also strengthens the State's construction sectors by generating jobs.

For the capital projects in construction at the end of the reporting period, the more than \$659 million (total project costs) investment in active school facilities represents the creation of more than 5,700 job-years throughout their lifecycle. In addition, the 199 active ROD Grants issued throughout the State, with total project costs of more than \$228 million, represent an additional 1,900 job-years for the construction workforce.

SDA Construction Supports Small Businesses and a Diverse Workforce

The goal of the SDA's Small Business program seeks to ensure that at least 25 percent of the total dollar value of all publicly advertised SDA contracts are awarded to Small Business Enterprises each fiscal year. To this end, the SDA requires consultants and prime contractors to make good-faith efforts to identify and hire available small business enterprise (SBE) sub-consultants and subcontractors and to award at least 25 percent of the total contract value to them.

Specific activity during this reporting period includes the award of six contracts totaling \$6,444,484, with 52.51 percent of the total dollar value awarded so far to Small Business Enterprises (inclusive of MBE and WBE firms). This included construction awards for five emergent projects and one design consultant notice to proceed.

The SDA also compiles information on the number of school construction contracts awarded by the Authority to women, minority, veteran and disabled veteran-owned contractors. This information includes the total value of these contracts and the percentage that they represent of all SDA school facilities projects that have entered into construction during the reporting period. This reporting period, minority-owned businesses received \$570,350 or 8.85 percent of total SDA construction contracts awarded. There were no awards to women-owned, veteran or disabled-veteran-owned businesses during the reporting period.

Minority/Female Workforce Hours

Through payroll certification, the SDA tracks the number of work hours by trade, broken down by minority and female workers. The chart below demonstrates the number of work hours on active construction sites and the percentage breakdown by women and minorities. During this reporting period, the SDA logged more than 298,000 work-hours across all trades. Of those hours, more than 30 percent were performed by a minority workforce.

Number of Minority/Female Work-Hours by Trade					
(April 1, 2022 - September 30, 2022)					
Trade	Total Work-Hours	Minority Work-Hours	Minority Work-Hours Percentage	Female Work-Hours	Female Work-Hours Percentage
Asbestos Removal/Treatment	1,028	773	75.19%	119	11.58%
Bricklayer/Mason	63,410	26,859	42.36%	622	0.98%
Carpenter	33,493	4,469	13.34%	59	0.18%
Caulking & Waterproofing	1,674	1,669	99.7%	0	0
Communications Systems	32	0	0	0	0
Concrete/Cement Finisher	24	0	0	0	0
Demolition	224	208	92.86%	0	0
Dry Wall - All	495	240	44.48%	22	4.44%
Electrician	33,381	8,011	24%	1,814	5.43%
Elevator Constructor	560	52	9.29%	0	0
Flooring/Tile Installation	770	61	7.92%	0	0
Glazier	2,634	476	18.07%	0	0
HVACR	24,023	1,632	6.79%	1,314	5.47%
Insulation - All	2,767	960	34.69%	0	0

Trade	Total Work-Hours	Minority Work-Hours	Minority Work-Hours Percentage	Female Work-Hours	Female Work-Hours Percentage
Iron Worker	17,041	2,462	14.45%	168	0.99%
Laborer	47,787	27,336	57.20	411	0.86%
On-site Supervision	636	0	0	0	0
Operating Engineer	8,574	858	10.01%	0	0
Painter	2,936	47	1.6%	0	0
Pipefitter	1,841	120	6.52%	0	0
Plumber	23,547	4,610	19.58%	510	2.17%
Roofer	16,195	6,828	42.16%	0	0
Sheet Metal Worker	10,872	1,734	15.95%	184	1.69%
Sprinkler Fitter	4,691	646	13.77%	0	0
Taper	52	52	100.00%	0	0
Truck Driver	34	0	0	0	0
TOTALS	298,721	90,103	30.16%	5,223	1.75%

SDA FINANCES

Since the Inception of the State Construction Program, the New Jersey State Legislature has authorized a total of \$14.825 billion in funding for SDA projects (\$10.8 billion for SDA Districts, and \$4.025 billion for RODs and vocational schools). Since the program's inception through the end of the reporting period (September 30, 2022), the amount of bonds issued to fund the program is approximately \$11.85 billion. There were no bond issuances during the reporting period, however the SDA did receive a \$75 million direct appropriation from the State, discussed below.

As of September 30, 2022, SDA had approximately \$460 million in cash on hand (this is inclusive of the \$75 million appropriation from the Fiscal Year 2023 Budget to be used for capital maintenance and emergent needs), having disbursed over \$121 million during the reporting period. In September 2022, the SDA Board approved the Authority's 2021 financial statements, audited by Ernst & Young LLP. These can be found on the SDA's website at:

<https://www.njsda.gov/Public/AnnualAndOtherReports>.

SDA continues to work diligently to recover funds for the program through multiple avenues. During the reporting period, the SDA recovered a total of \$525,000 in partial settlement of professional negligence cost recovery litigation it brought against the engineering sub-consultant and the project management firm in connection with the Paterson International High School Project. SDA's legal counsel continuously reviews all cost recovery opportunities including those identified by the SDA's internal audit team to ensure the efficient use of taxpayer dollars to provide for additional projects in the future.